

# Histone H4 Rabbit Polyclonal Antibody

## Catalog No: RA20005

### Basic Information

Host species	Rabbit
Applications	WB, IHC
Species Cross-Reactivity	H, R, M
Specificity	The Histone H4 antibody can detect endogenous Histone H4 protein.
Recommended dilutions	WB: 1:1,000-2,000      IHC: 1:200-500 Optimal dilutions should be determined by the end user.

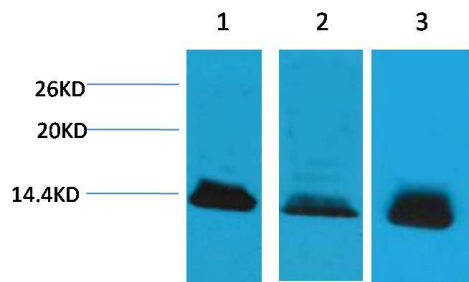
### Applications

Formulation	PBS, pH 7.4, containing 0.02% sodium azide as Preservative and 50% Glycerol.
Storage	Store at -20°C. Avoid repeated freeze-thaw cycles.
Concentration	1 mg/ml
Clonality	Polyclonal

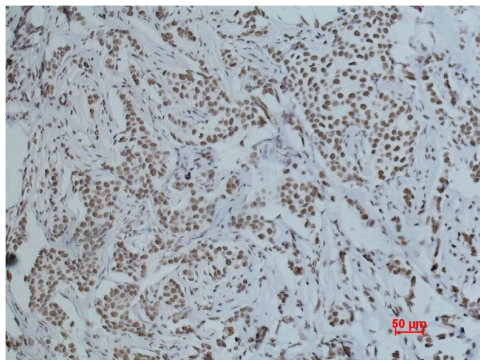
### Background

Alternative Names	Histone 1 H4 antibody, HIST1H4K antibody, MGC24116 antibody, dj160A22.1 antibody
Observed band	14
Human Gene ID	8294
Human Swiss-Prot Number	P62805
Background	Histone H4 is one of the 5 main histone proteins involved in the structure of chromatin in eukaryotic cells. H4 is a structural component of the nucleosome, and is subject to covalent modification, including acetylation and methylation, which may alter expression of genes located on DNA associated with its parent histone octamer.

## Selected Validation Data



Western blot analysis of 1) HeLa, 2)3T3, 3) Rat Kidney tissue with Histone H4 Rabbit pAb diluted at 1:1,000.



Immunohistochemical analysis of paraffin-embedded Human Breast Carcinoma using Histone H4 Rabbit pAb diluted at 1:500.