

c-Fos Rabbit Polyclonal Antibody

Catalog No: RA20003

Basic Information

Host species	Rabbit
Applications	WB, IHC
Species Cross-Reactivity	H, R, M
Specificity	The c-Fos antibody can detect endogenous c-Fos protein.
Recommended dilutions	WB: 1:1,000-2,000 IHC: 1:500-1,000 Optimal dilutions should be determined by the end user.

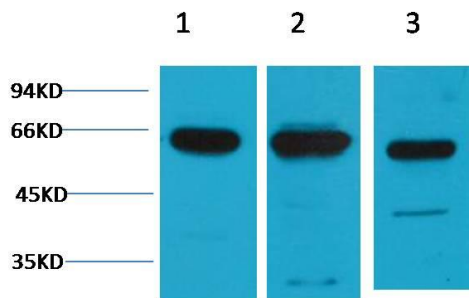
Applications

Formulation	PBS, pH 7.4, containing 0.02% sodium azide as Preservative and 50% Glycerol.
Storage	Store at -20°C. Avoid repeated freeze-thaw cycles.
Concentration	1 mg/ml
Clonality	Polyclonal

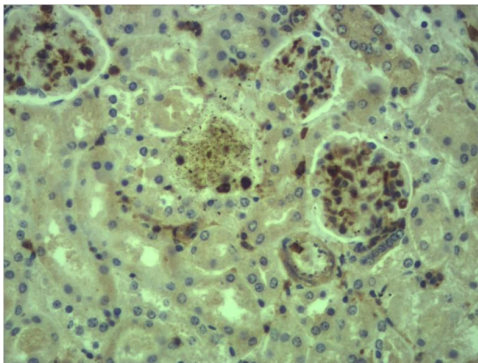
Background

Alternative Names	AP1 antibody, Cellular oncogene c fos antibody, p55 antibody, proto oncogene c fos antibody
Observed band	62
Human Gene ID	2353
Human Swiss-Prot Number	P01100
Background	c-Fos is a proto-oncogene that is the human homolog of the retroviral oncogene v-fos. c-fos is 380 amino acid protein with a basic leucine zipper region for dimerisation and DNA-binding and a transactivation domain at C-terminus.

Selected Validation Data



Western blot analysis of 1) Hela, 2) Mouse Brain, 3) Rat Brain tissue with c-Fos Rabbit Polyclonal Antibody diluted at 1:2,000.



Immunohistochemical analysis of paraffin-embedded Mouse Kidney Tissue using c-Fos Rabbit pAb diluted at 1:500.