

HSV Mouse Monoclonal Antibody(Q72)

Catalog No: RA10467

Basic Information

Host species	Mouse
Applications	WB
Species Cross-Reactivity	N/A
Specificity	The HSV tag antibody can recognize HSV tag fusion proteins.
Recommended dilutions	WB: 1:5,000-10,000 Optimal dilutions should be determined by the end user.

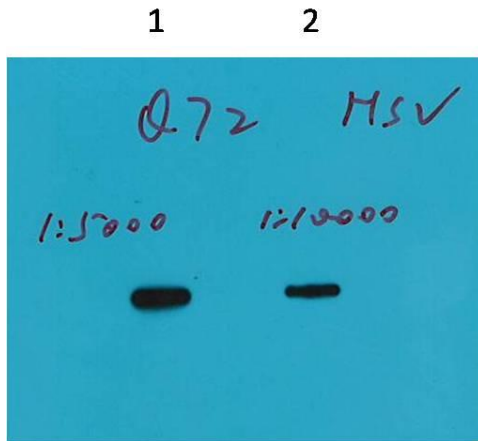
Applications

Formulation	PBS, pH 7.4, containing 0.02% sodium azide as Preservative and 50% Glycerol.
Storage	Store at -20°C. Avoid repeated freeze-thaw cycles.
Concentration	1 mg/ml
Clonality	Monoclonal

Background

Alternative Names	HSV epitope tag, QPELAPEDPED tag
Observed band	N/A
Human Gene ID	
Human Swiss-Prot Number	N/A
Background	HSV-tag peptide QPELAPEDPED conjugated to KLH. HSV- Tag antibody can recognize C-terminal, internal, and N-terminal HSV-tagged proteins.

Selected Validation Data



Western blot analysis of Recombinant protein with HSV Mouse mAb(Q72) diluted at 1) 1:5,000 2) 1:10,000