

# CD15 Mouse Monoclonal Antibody(Q89)

## Catalog No: RA10466

### Basic Information

Host species	Mouse
Applications	IHC
Species Cross-Reactivity	H
Specificity	Antibody can detects endogenous CD15 protein.
Recommended dilutions	IHC: 1:200-500 Optimal dilutions should be determined by the end user.

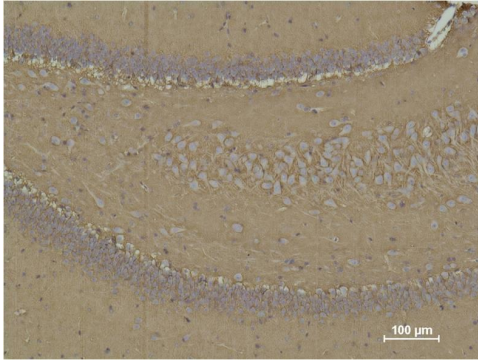
### Applications

Formulation	PBS, pH 7.4, containing 0.02% sodium azide as Preservative and 50% Glycerol.
Storage	Store at -20°C. Avoid repeated freeze-thaw cycles.
Concentration	1 mg/ml
Clonality	Monoclonal

### Background

Alternative Names	ELAM-1,ELFT, FCT3A, Fuc-TIV, FUT4, Galactoside 3 L fucosyltransferase
Observed band	N/A
Human Gene ID	2526
Human Swiss-Prot Number	0
Background	CD15 (3-fucosyl-N-acetyl-lactosamine) is a cluster of differentiation antigen - an immunologically significant molecule. CD15 is a carbohydrate adhesion molecule (not a protein) that can be expressed on glycoproteins, glycolipids and proteoglycans.

## Selected Validation Data



Immunohistochemical analysis of paraffin-embedded Rat Brain Tissue using CD 15 Mouse mAb diluted at 1:500.