

Rubisco(Large Chain) Mouse Monoclonal Antibody(3G7)

Catalog No: RA10460

Basic Information

Host species	Mouse
Applications	WB
Species Cross-Reactivity	Various Plants
Specificity	The Rubisco Mouse Polyclonal Antibody can detects endogenous Rubisco Large Chain protein.
Recommended dilutions	WB: 1:2,000-10,000 Optimal dilutions should be determined by the end user.

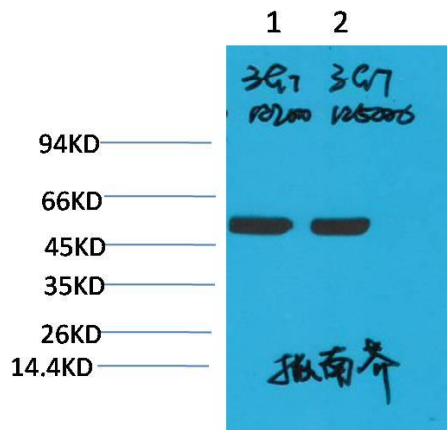
Applications

Formulation	PBS, pH 7.4, containing 0.02% sodium azide as Preservative and 50% Glycerol.
Storage	Store at -20°C. Avoid repeated freeze-thaw cycles.
Concentration	1 mg/ml
Clonality	Monoclonal

Background

Alternative Names	Ribulose bisphosphate carboxylase oxygenase
Observed band	53
Human Gene ID	
Human Swiss-Prot Number	N/A
Background	Ribulose-1,5-bisphosphate carboxylase oxygenase, commonly known by the abbreviation RuBisCO, is an enzyme involved in the first major step of carbon fixation, a process by which atmospheric carbon dioxide is converted by plants to energy-rich molecules such as glucose.

Selected Validation Data



Western blot analysis of Arabidopsis with Rubisco(Large Chain)
Mouse mAb diluted at 1)1:2,000 2)1:5,000