

# Phosphotyrosine Mouse Monoclonal Antibody(2C1)

## Catalog No: RA10456

### Basic Information

Host species	Mouse
Applications	WB, IHC
Species Cross-Reactivity	ALL
Specificity	Antibody can detects endogenous Tyrosine Phosphorylated protein.
Recommended dilutions	WB: 1:2,000-5,000    IHC: 1:50-100 Optimal dilutions should be determined by the end user.

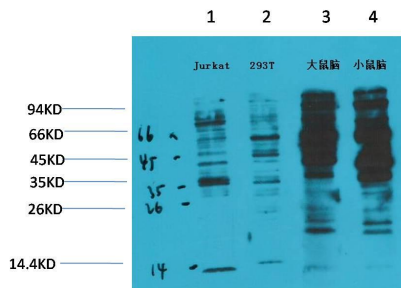
### Applications

Formulation	PBS, pH 7.4, containing 0.02% sodium azide as Preservative and 50% Glycerol.
Storage	Store at -20°C. Avoid repeated freeze-thaw cycles.
Concentration	1 mg/ml
Clonality	Monoclonal

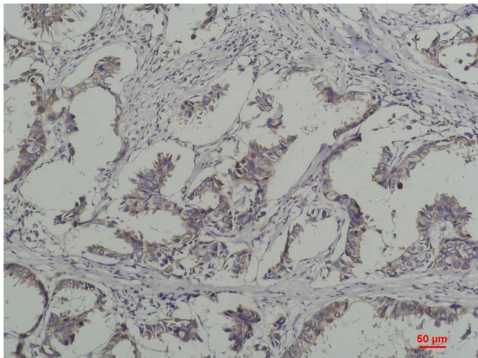
### Background

Alternative Names	N/A
Observed band	N/A
Human Gene ID	
Human Swiss-Prot Number	N/A
Background	The phosphorylation of specific tyrosine residues has been shown to be a primary mechanism of signal transduction during normal mitogenesis, cell cycle progression and oncogenic transformation, its role in other areas such as differentiation and gap junction communication, is a matter of active and ongoing research.

## Selected Validation Data



Western blot analysis of 1) Jurkat, 2) 293T, 3) Rat Brain Tissue, 4) Mouse Brain Tissue with Phosphotyrosine Mouse mAb diluted at 1:2,000.



Immunohistochemical analysis of paraffin-embedded Human Breast Carcinoma using Phosphotyrosine Mouse mAb diluted at 1:200.