

# Acetyl Lysine Mouse Monoclonal Antibody(10B10)

## Catalog No: RA10455

### Basic Information

Host species	Mouse
Applications	WB, IHC
Species Cross-Reactivity	ALL
Specificity	The Acetyl Lysine Mouse Monoclonal Antibody can detects endogenous Lysine Acetylated protein.
Recommended dilutions	WB: 1:1,000-2,000      IHC: 1:200-500 Optimal dilutions should be determined by the end user.

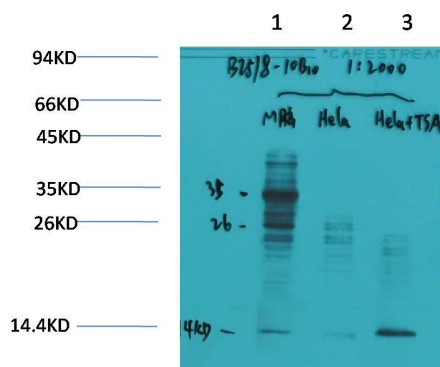
### Applications

Formulation	PBS, pH 7.4, containing 0.02% sodium azide as Preservative and 50% Glycerol.
Storage	Store at -20°C. Avoid repeated freeze-thaw cycles.
Concentration	1 mg/ml
Clonality	Monoclonal

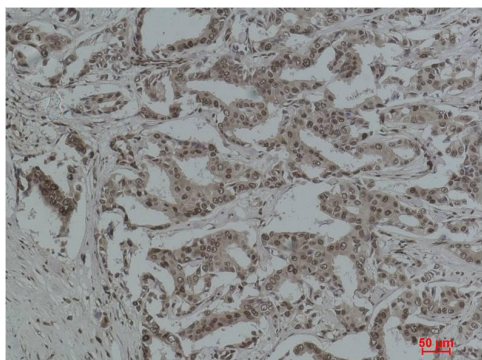
### Background

Alternative Names	Ac K antidoby
Observed band	N/A
Human Gene ID	
Human Swiss-Prot Number	N/A
Background	Acetylation of lysine, like phosphorylation of serine, threonine or tyrosine, is an important reversible modification controlling protein activity. The role of acetylation in intracellular signaling has been inferred from the binding of acetylated peptides by the conserved bromodomain.

## Selected Validation Data



Western blot analysis of 1) Mouse Brain Tissue, 2)HeLa, 3)HeLa+TSA Treated with Acetyl Lysine Mouse mAb diluted at 1:2,000.



Immunohistochemical analysis of paraffin-embedded Human Breast Carcinoma using Acetylated Lysine Mouse mAb diluted at 1:500.