

# PhosphoSerine Mouse Monoclonal Antibody(2D7)

## Catalog No: RA10453

### Basic Information

Host species	Mouse
Applications	WB,IHC
Species Cross-Reactivity	ALL
Specificity	Antibody can detects endogenous PhosphoSerine protein.
Recommended dilutions	WB: 1:1,000-2,000    IHC: 1:100-500 Optimal dilutions should be determined by the end user.

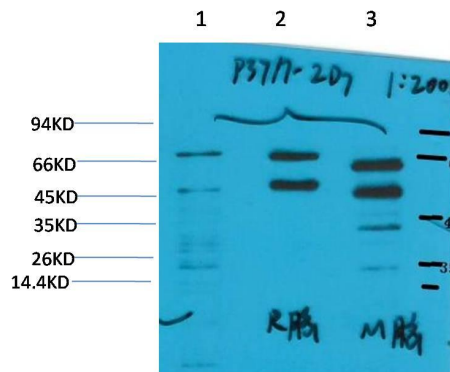
### Applications

Formulation	PBS, pH 7.4, containing 0.02% sodium azide as Preservative and 50% Glycerol.
Storage	Store at -20°C. Avoid repeated freeze-thaw cycles.
Concentration	1 mg/ml
Clonality	Monoclonal

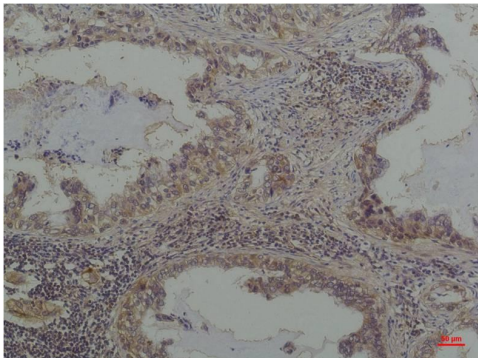
### Background

Alternative Names	N/A
Observed band	N/A
Human Gene ID	
Human Swiss-Prot Number	N/A
Background	

## Selected Validation Data



Western blot analysis of 1) HeLa, 2) Rat Brain Tissue, 3) Mouse Brain Tissue with Phosphoserine Mouse mAb diluted at 1:2,000.



Immunohistochemical analysis of paraffin-embedded Human Lung Carcinoma using Phosphoserine Mouse mAb diluted at 1:200.