

# Pan Methylated Lysine Mouse Monoclonal Antibody(Mix-mA)

## Catalog No: RA10452

### Basic Information

Host species	Mouse
Applications	WB, IHC
Species Cross-Reactivity	N/A
Specificity	The pan Methylated Lysine antibody can detects endogenous protein Methylated Lysine.
Recommended dilutions	WB: 1:1,000-2,000      IHC: 1:200-500 Optimal dilutions should be determined by the end user.

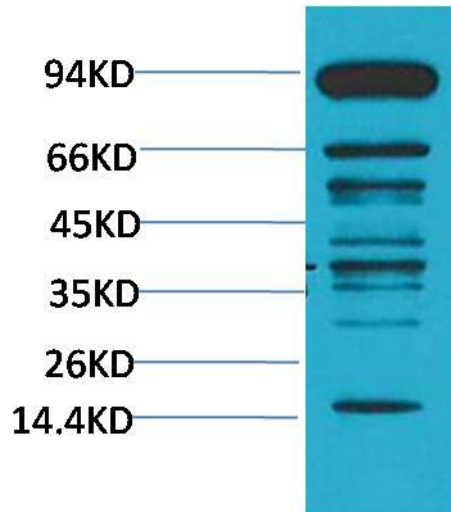
### Applications

Formulation	PBS, pH 7.4, containing 0.02% sodium azide as Preservative and 50% Glycerol.
Storage	Store at -20°C. Avoid repeated freeze-thaw cycles.
Concentration	1 mg/ml
Clonality	Monoclonal

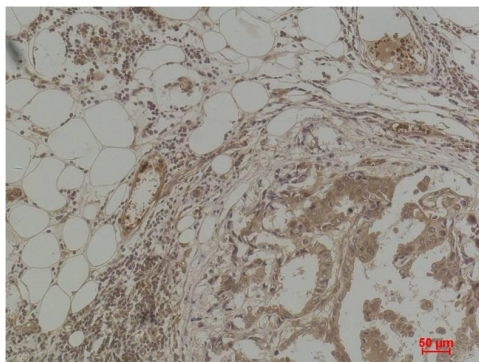
### Background

Alternative Names	N/A
Observed band	N/A
Human Gene ID	
Human Swiss-Prot Number	N/A
Background	Many proteins are post translationally modified. Modifications such as phosphorylation, glycosylation, ubiquitination and methylation have been shown to play an important role in the development, physiology and disease of animals and plants.

Selected Validation Data



Western blot analysis of HeLa with Pan Methylated Lysine Mouse mAb diluted at 1:2,000.



Immunohistochemical analysis of paraffin-embedded Human Breast Carcinoma using Pan Methylated Lysine Mouse mAb diluted at 1:500.