

Rabbit IgG(Light Chain Specific) Mouse Monoclonal Antibody(8D6)

Catalog No: RA10429

Basic Information

Host species	Mouse
Applications	WB, IHC
Species Cross-Reactivity	Rabbit
Specificity	The antibody reacts with the light chains on rabbit IgG and with those common to other rabbit immunoglobulins. The antibody does not react with the heavy chain of rabbit IgG. The antibody minimal cross-reaction with bovine, goat, Armenian hamster, horse,
Recommended dilutions	WB: 1:5,000-20,000 IHC: 1:200-500 Optimal dilutions should be determined by the end user.

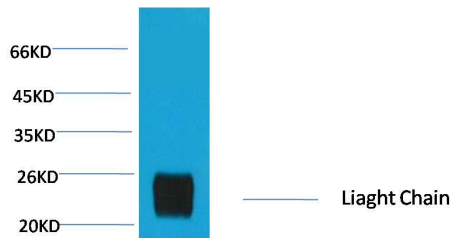
Applications

Formulation	PBS, pH 7.4, containing 0.02% sodium azide as Preservative and 50% Glycerol.
Storage	Store at -20°C. Avoid repeated freeze-thaw cycles.
Concentration	1 mg/ml
Clonality	Monoclonal

Background

Alternative Names	
Observed band	25
Human Gene ID	
Human Swiss-Prot Number	N/A
Background	

Selected Validation Data



Western blot analysis of Reduced Rabbit IgG, H+L with Rabbit IgG(Light Chain Specific) Mouse Monoclonal Antibody(8D6) diluted at 1:10,000.