

Rabbit IgG(Fc specific,Heavy Chain) Mouse Monoclonal Antibody(1E1)

Catalog No: RA10428

Basic Information

Host species	Mouse
Applications	WB, IHC
Species Cross-Reactivity	Rabbit
Specificity	The antibody reacts with the Fc portion of rabbit IgG heavy chain but not with the Fab portion of rabbit immunoglobulins. The antibody may cross-react with immunoglobulins from other species.
Recommended dilutions	WB: 1:5,000-20,000 IHC: 1:200-500 Optimal dilutions should be determined by the end user.

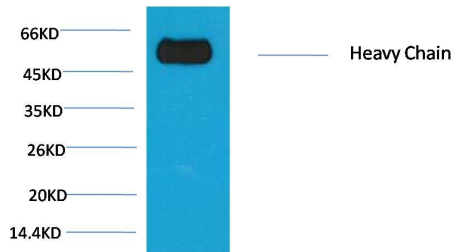
Applications

Formulation	PBS, pH 7.4, containing 0.02% sodium azide as Preservative and 50% Glycerol.
Storage	Store at -20°C. Avoid repeated freeze-thaw cycles.
Concentration	1 mg/ml
Clonality	Monoclonal

Background

Alternative Names	
Observed band	55
Human Gene ID	
Human Swiss-Prot Number	N/A
Background	

Selected Validation Data



Western blot analysis of Reduced Rabbit IgG, H+L with TDY303 diluted at 1:10,000.