

# Rabbit IgG(H+L) Mouse Monoclonal Antibody(Mix-mA™)

## Catalog No: RA10427

### Basic Information

Host species	Mouse
Applications	WB, IHC
Species Cross-Reactivity	Rabbit
	The antibody reacts with whole molecule rabbit IgG. The antibody may cross-react with immunoglobulins from other species.
	/
	_x0007_
	_x0007_
	_x0007_ Western blot analysis of Reduced Rabbit IgG, H+L with TDY302 diluted at 1:10,000.
Specificity	
	_x0007_
	_x0007_
	_x0007_
	_x0007_
	_x0007_
Recommended dilutions	WB: 1:5,000-20,000      IHC: 1:200-500 Optimal dilutions should be determined by the end user.

### Applications

Formulation	PBS, pH 7.4, containing 0.02% sodium azide as Preservative and 50% Glycerol.
Storage	Store at -20°C. Avoid repeated freeze-thaw cycles.
Concentration	1 mg/ml
Clonality	Monoclonal

### Background

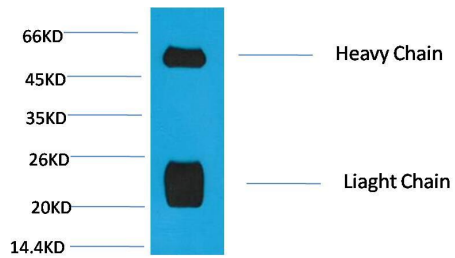
Alternative Names	
Observed band	25,55

Human Gene ID

Human Swiss-Prot Number      N/A

Background

## Selected Validation Data



Western blot analysis of Reduced Rabbit IgG, H+L with Rabbit IgG(H+L) Mouse Monoclonal Antibody(Mix-mA™) diluted at 1:10,000.