

alpha-Syneuclein Mouse Monoclonal Antibody(2E2)

Catalog No: RA10412

Basic Information

Host species	Mouse
Applications	
Species Cross-Reactivity	
Specificity	The antibody detects endogenous alpha-Syneuclein proteins.
Recommended dilutions	ELISA 1:2,000-10,000 IHC 1:100-200 Optimal dilutions should be determined by the end user.

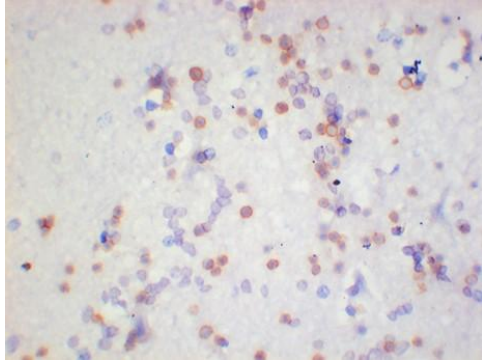
Applications

Formulation	PBS, pH 7.4, containing 0.02% sodium azide as Preservative and 50% Glycerol.
Storage	Store at -20°C. Avoid repeated freeze-thaw cycles.
Concentration	1 mg/ml
Clonality	Monoclonal

Background

Alternative Names	PARK1, SYN, SNCA, MGC105443,NACP
Observed band	14
Human Gene ID	6622
Human Swiss-Prot Number	P37840
Background	Genetic alterations of SNCA resulting in aberrant polymerization into fibrils, are associated with several neurodegenerative diseases (synucleinopathies). SNCA fibrillar aggregates represent the major non A-beta component of Alzheimer disease amyloid plaque, and a major component of Lewy body inclusions.

Selected Validation Data



Immunohistochemical analysis of paraffin-embedded Human Brain Tissue using alpha Synuclein Mouse mAb diluted at 1:200.