

## PAX-5 Mouse mAb(Mix-mA)

**Catalog No: RA10408**

### Basic Information

Host species	Mouse
Applications	WB
Species Cross-Reactivity	H, M, R
Specificity	Antibody can detects endogenous PAX-5 proteins.
Recommended dilutions	WB: 1:1,000-2,000 Optimal dilutions should be determined by the end user.

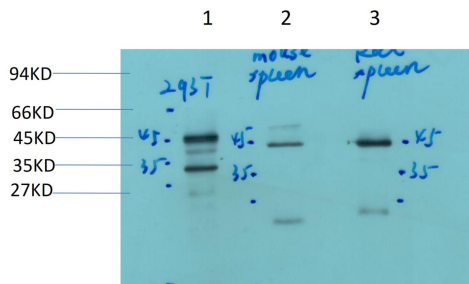
### Applications

Formulation	Antigen Affinity Purified Rabbit IgG, 1mg/ml in PBS pH7.4, containing 0.02% sodium azide as Preservative and 50% Glycerol.
Storage	Store at -20°C. Avoid repeated freeze-thaw cycles.
Concentration	1 mg/ml
Clonality	Monoclonal

### Background

Alternative Names	Paired box protein 5, BSAP,B-cell-specific transcription factor
Observed band	~42
Human Gene ID	5079
Human Swiss-Prot Number	Q02548
Background	Paired box 5(PAX5) Homo sapiens This gene encodes a member of the paired box (PAX) family of transcription factors. The central feature of this gene family is a novel, highly conserved DNA-binding motif, known as the paired box. Paired box transcription factors are important regulators in early development, and alterations in the expression of their genes are thought to contribute to neoplastic transformation. This gene encodes the B-cell lineage specific activator protein that is expressed at early, but not late stages of B-cell differentiation. Its expression has also been detected in developing CNS and testis and so the encoded protein may also play a role in neural development and spermatogenesis.

## Selected Validation Data



Western blot analysis of 1)293T Cell, 2) Mouse Spleen Tissue, 3) Rat Spleen Tissue Lysate using PAX-5 Mouse Monoclonal Antibody diluted at 1:2,000.