

Fibronectin Mouse Monoclonal Antibody(M9)

Catalog No: RA10403

Basic Information

Host species	Mouse
Applications	WB, IHC
Species Cross-Reactivity	H
Specificity	Antibody can detects endogenous Fibronectin protein.
Recommended dilutions	WB: 1:1,000-2,000 IHC: 1:100-200 Optimal dilutions should be determined by the end user.

Applications

Formulation	PBS, pH 7.4, containing 0.02% sodium azide as Preservative and 50% Glycerol.
Storage	Store at -20°C. Avoid repeated freeze-thaw cycles.
Concentration	1 mg/ml
Clonality	Monoclonal

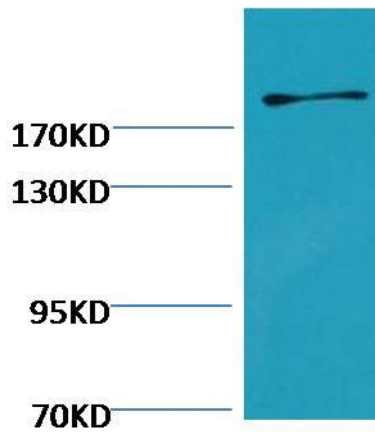
Background

Alternative Names	CIG, Cold insoluble globulin, fibronectin 1, FN, fN1, FNZ, GFND, GFND2, Ugl-Y3
Observed band	285
Human Gene ID	2335
Human Swiss-Prot Number	P02751

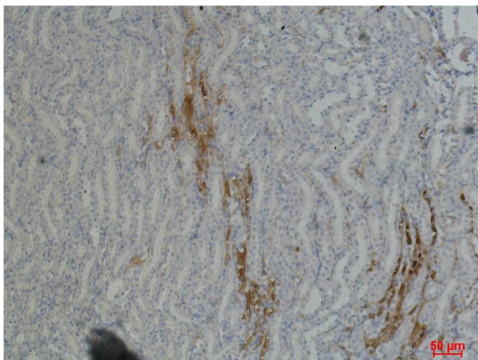
Background

Fibronectin is a high-molecular weight glycoprotein of the extracellular matrix that binds to membrane-spanning receptor proteins called integrins. Similar to integrins, fibronectin binds extracellular matrix components such as collagen. Fibronectin exists as a protein dimer, consisting of two nearly identical monomers linked by a pair of disulfide bonds. The fibronectin protein is produced from a single gene, but alternative splicing of its pre-mRNA leads to the creation of several isoforms.

Selected Validation Data



Western blot analysis of Hela with Fibronectin Mouse mAb diluted at 1:2,000.



Immunohistochemical analysis of paraffin-embedded Mouse Kidney Tissue using Fibronectin Mouse mAb diluted at 1:500.