

EGFR Mouse Monoclonal Antibody(M6)

Catalog No: RA10400

Basic Information

Host species	Mouse
Applications	WB, IP, IF, IHC
Species Cross-Reactivity	H
Specificity	Antibody can detects endogenous EGFR protein.
Recommended dilutions	WB: 1:1,000-3,000 IP:1:200 IF: 1:100-200 IHC: 1:100-200 Optimal dilutions should be determined by the end user.

Applications

Formulation	PBS, pH 7.4, containing 0.02% sodium azide as Preservative and 50% Glycerol.
Storage	Store at -20°C. Avoid repeated freeze-thaw cycles.
Concentration	1 mg/ml
Clonality	Monoclonal

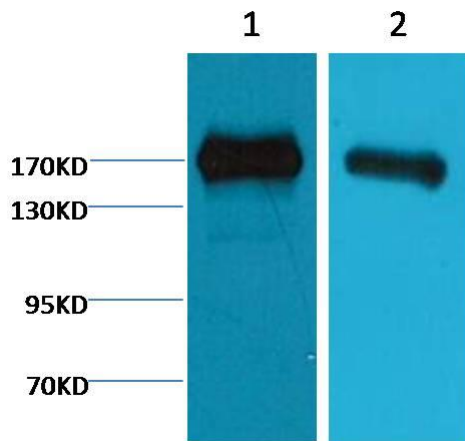
Background

Alternative Names	Epidermal growth factor receptor antibody, erbb 1 antibody, Receptor tyrosine protein kinase ErbB 1 antibody
Observed band	170
Human Gene ID	1956
Human Swiss-Prot Number	P00533

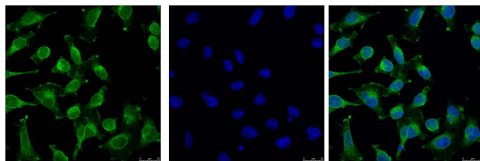
Background

The epidermal growth factor receptor (EGFR; ErbB-1; HER1 in humans) is the cell-surface receptor for members of the epidermal growth factor family (EGF-family) of extracellular protein ligands. Known ligands include EGF, TGFA/TGF-alpha, amphiregulin, epigen/EPGN, BTC/betacellulin, epiregulin/EREG and HBEGF/heparin-binding EGF. Ligand binding triggers receptor homo- and/or heterodimerization and autophosphorylation on key cytoplasmic residues. The phosphorylated receptor recruits adapter proteins like GRB2 which in turn activates complex downstream signaling cascades.

Selected Validation Data



Western blot analysis of 1) A431 ,2) HeLa, with EGFR Mouse Monoclonal Antibody(M6) diluted at 1:2,000.



IF analysis of HeLa with EGFR Mouse Monoclonal Antibody(M6)(Left) and DAPI (Right) diluted at 1:100.