

# HSP90 $\beta$ Mouse Monoclonal Antibody(M2)

## Catalog No: RA10396

### Basic Information

Host species	Mouse
Applications	WB,IHC
Species Cross-Reactivity	H, R, M
Specificity	Antibody can detects endogenous HSP90 $\beta$ protein.
Recommended dilutions	WB: 1:1,000-3,000IHC: 1:200-500 Optimal dilutions should be determined by the end user.

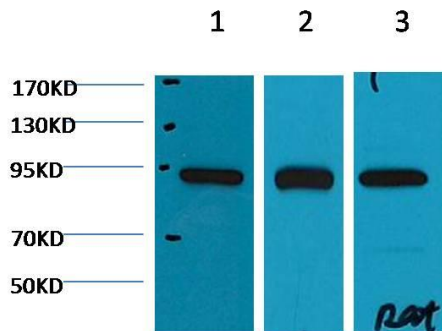
### Applications

Formulation	PBS, pH 7.4, containing 0.02% sodium azide as Preservative and 50% Glycerol.
Storage	Store at -20°C. Avoid repeated freeze-thaw cycles.
Concentration	1 mg/ml
Clonality	Monoclonal

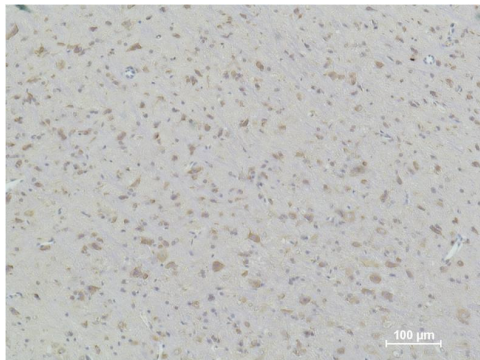
### Background

Alternative Names	Heat shock 90KD protein 1 beta, HS90B, HSP90B, HSP90 beta, HSPCB, HSPC2, HSP 90b, HSP84
Observed band	90
Human Gene ID	3326
Human Swiss-Prot Number	P08238
Background	Hsp90 (heat shock protein 90) is a chaperone protein that assists other proteins to fold properly, stabilizes proteins against heat stress, and aids in protein degradation. In mammalian cells, there are two or more genes encoding cytosolic Hsp90 homologues, with the human Hsp90 $\alpha$ showing 85% sequence identity to Hsp90 $\beta$ .

## Selected Validation Data



Western blot analysis of 1) HeLa, 2) Mouse Brain tissue, 3) Rat Brain tissue with HSP90b Mouse mAb diluted at 1:2,000.



Immunohistochemical analysis of paraffin-embedded Rat Brain Tissue using HSP90b Mouse mAb diluted at 1:500.