

Cytokeratin 18 Mouse Monoclonal Antibody(1B3)

Catalog No: RA10373

Basic Information

Host species	Mouse
Applications	WB, IF, IHC
Species Cross-Reactivity	H, R, M
Specificity	Antibody can detects endogenous Cytokeratin 18 protein.
Recommended dilutions	WB: 1:1,000 -3,000 IF: 1:100-200 IHC: 1:200-500 Optimal dilutions should be determined by the end user.

Applications

Formulation	PBS, pH 7.4, containing 0.02% sodium azide as Preservative and 50% Glycerol.
Storage	Store at -20°C. Avoid repeated freeze-thaw cycles.
Concentration	1 mg/ml
Clonality	Monoclonal

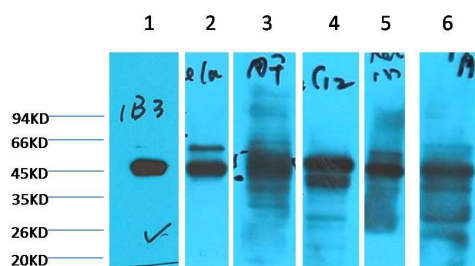
Background

Alternative Names	Cell proliferation inducing gene 46 protein, CK 18, CYK 18, K 18, Keratin 18, Ketatin D, KRT18
Observed band	46
Human Gene ID	3875
Human Swiss-Prot Number	P05783

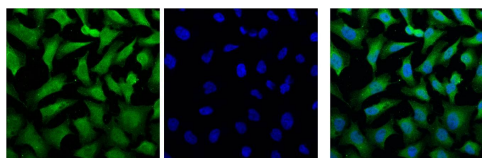
Background

Keratin 18 is a type I cytokeratin. It is, together with its filament partner keratin 8, perhaps the most commonly found products of the intermediate filament gene family. They are expressed in single layer epithelial tissues of the body. Mutations in this gene have been linked to cryptogenic cirrhosis. Two transcript variants encoding the same protein have been found for this gene. Keratin 18 is often used together with keratin 8 and keratin 19 to differentiate cells of epithelial origin from hematopoietic cells in tests that enumerate circulating tumor cells in blood.

Selected Validation Data



Western blot analysis of 1) HepG2, 2) HeLa, 3) Mouse Liver tissue, 4) C2C12, 5) Rat Heart tissue, 6) Mouse Skeletal Muscle tissue with Cytokeratin 18 Mouse MAb (1B3) diluted at 1:2000.



IF analysis of HeLa with Cytokeratin 18 Mouse MAb (1B3)(Left) and DAPI (Right) diluted at 1:100.