

# CD16 Mouse Monoclonal Antibody(Q32)

## Catalog No: RA10368

### Basic Information

Host species	Mouse
Applications	WB, IHC
Species Cross-Reactivity	H
Specificity	Antibody can detects endogenous CD16 protein.
Recommended dilutions	WB: 1:1,000-2,000IHC: 1:100-200 Optimal dilutions should be determined by the end user.

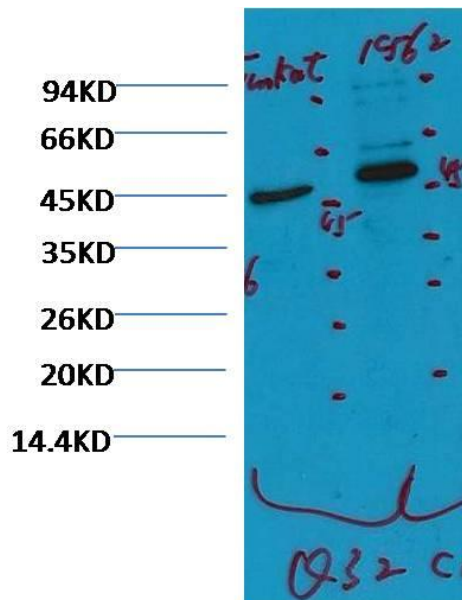
### Applications

Formulation	PBS, pH 7.4, containing 0.02% sodium azide as Preservative and 50% Glycerol.
Storage	Store at -20°C. Avoid repeated freeze-thaw cycles.
Concentration	1 mg/ml
Clonality	Monoclonal

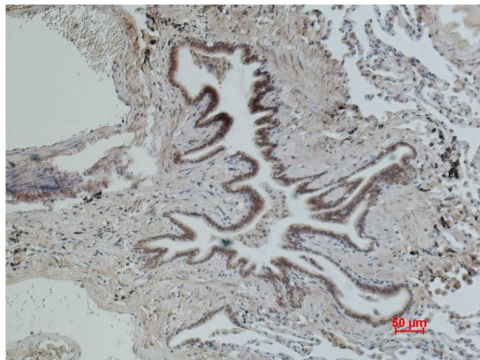
### Background

Alternative Names	CD16A, CD16B, Fc fragment of IgG, Fc fragment of IgG low affinity IIIa receptor, Fc gamma R3, FCGR3, FcR10, IgG Fc receptor III 2, Low affinity IIIa receptor
Observed band	45
Human Gene ID	2214
Human Swiss-Prot Number	P08637
Background	CD16 is a low affinity Fc receptor.It is a cluster of differentiation found on the surface of natural killer cells, neutrophil polymorphonuclear leukocytes, monocytes and macrophages.

Selected Validation Data



Western blot analysis of 1) Jurkat, 2)K562 CD16 Mouse mAb(Q32) diluted at 1:2000.



Immunohistochemical analysis of paraffin-embedded Human Lung Carcinoma using CD16 Mouse mAb diluted at 1:200.