

EFHD1 Mouse Monoclonal Antibody(3G2)

Catalog No: RA10363

Basic Information

Host species	Mouse
Applications	WB, IF
Species Cross-Reactivity	H, R, M
Specificity	EFHD1 Mouse Monoclonal antibody detects endogenous EFHD1 proteins.
Recommended dilutions	WB: 1:2,000 IF: 1:100-200 Optimal dilutions should be determined by the end user.

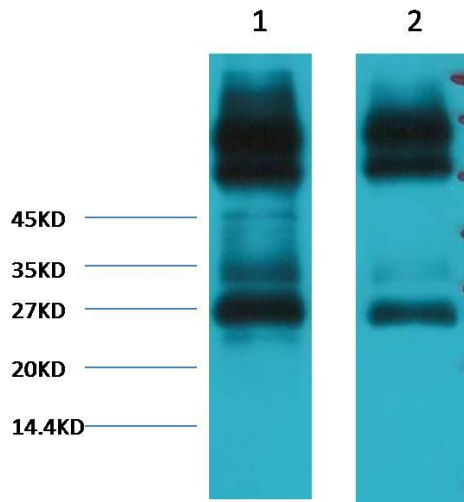
Applications

Formulation	PBS, pH 7.4, containing 0.02% sodium azide as Preservative and 50% Glycerol.
Storage	Store at -20°C. Avoid repeated freeze-thaw cycles.
Concentration	1 mg/ml
Clonality	Monoclonal

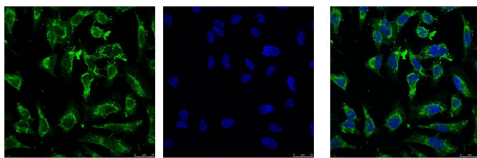
Background

Alternative Names	
Observed band	27
Human Gene ID	80303
Human Swiss-Prot Number	Q9BUP0
Background	EFHD1 is an EF-hand domain-containing protein that displays increased expression during neuronal differentiation.

Selected Validation Data



Western blot analysis of 1) Mouse spleen tissue, 2) Rat spleen tissue, with EFHD1 Mouse mAb diluted at 1:3,000.



IF analysis of HeLa with EFHD1 Mouse mAb(Left) and DAPI (Right) diluted at 1:100.