

CD23 Mouse Monoclonal Antibody (10H2)

Catalog No: RA10360

Basic Information

Host species	Mouse
Applications	WB, IHC
Species Cross-Reactivity	H, R, M
Specificity	CD23 Mouse Monoclonal antibody detects endogenous CD23 proteins.
Recommended dilutions	WB: 1:1,000 IHC: 1:200-500 Optimal dilutions should be determined by the end user.

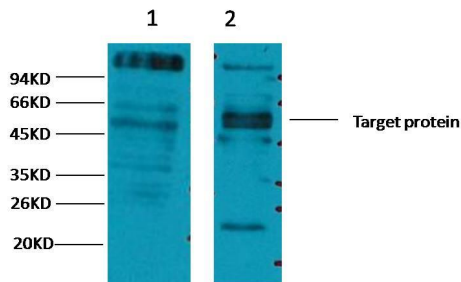
Applications

Formulation	PBS, pH 7.4, containing 0.02% sodium azide as Preservative and 50% Glycerol.
Storage	Store at -20°C. Avoid repeated freeze-thaw cycles.
Concentration	1 mg/ml
Clonality	Monoclonal

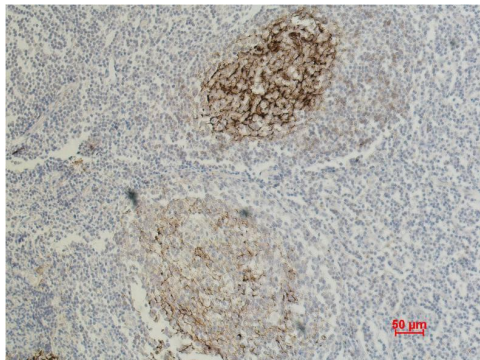
Background

Alternative Names	
Observed band	36
Human Gene ID	2208
Human Swiss-Prot Number	P06734
Background	CD23, also known as Fc epsilon RII, or FcεRII, is the "low-affinity" receptor for IgE, an antibody isotype involved in allergy and resistance to parasites, and is important in regulation of IgE levels. Unlike many of the antibody receptors, CD23 is a C-type lectin. It is found on mature B cells, activated macrophages, eosinophils, follicular dendritic cells, and platelets.

Selected Validation Data



Western blot analysis of 1) HeLa, 2) Mouse Brain tissue ,with CD23 Mouse mAb diluted at 1:2,000.



Immunohistochemical analysis of paraffin-embedded Human Tonsil Carcinoma using CD23 Mouse mAb diluted at 1:500.