

# Cytokeratin 6 Mouse Monoclonal Antibody(4A1)

**Catalog No: RA10358**

## Basic Information

Host species	Mouse
Applications	WB, IHC
Species Cross-Reactivity	H
Specificity	Cytokeratin 6 Mouse Monoclonal antibody detects endogenous Cytokeratin 6 proteins.
Recommended dilutions	WB: 1:1,000      IHC: 1:200 Optimal dilutions should be determined by the end user.

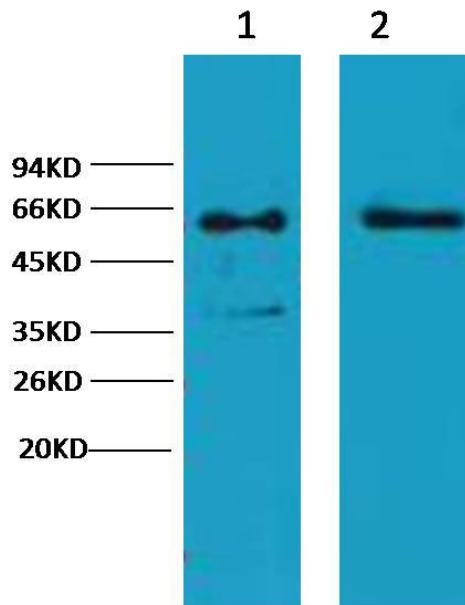
## Applications

Formulation	PBS, pH 7.4, containing 0.02% sodium azide as Preservative and 50% Glycerol.
Storage	Store at -20°C. Avoid repeated freeze-thaw cycles.
Concentration	1 mg/ml
Clonality	Monoclonal

## Background

Alternative Names	
Observed band	56-60
Human Gene ID	286887
Human Swiss-Prot Number	P02538
Background	Cytokeratins are proteins of keratin-containing intermediate filaments found in the intracytoplasmic cytoskeleton of epithelial tissue.

Selected Validation Data



Western blot analysis of 1) HeLa, 2) HepG2 ,with Cytokeratin  
Mouse mAb diluted at 1:2,000.