

ErbB-2 HER-2 Mouse Monoclonal Antibody (3C9)

Catalog No: RA10357

Basic Information

| | |
|--------------------------|--|
| Host species | Mouse |
| Applications | WB, IHC |
| Species Cross-Reactivity | H |
| Specificity | ErbB-2 Mouse Monoclonal antibody detects endogenous ErbB-2 proteins. |
| Recommended dilutions | WB: 1:1,000 IHC: 1:200-500 Optimal dilutions should be determined by the end user. |

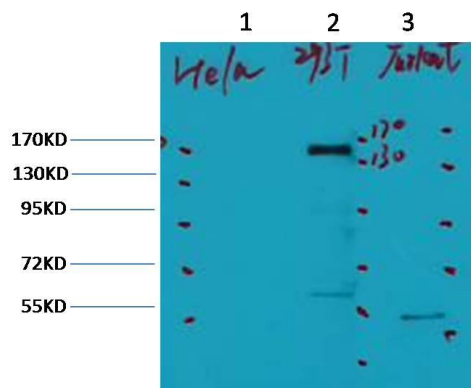
Applications

| | |
|---------------|--|
| Formulation | PBS, pH 7.4, containing 0.02% sodium azide as Preservative and 50% Glycerol. |
| Storage | Store at -20°C. Avoid repeated freeze-thaw cycles. |
| Concentration | 1 mg/ml |
| Clonality | Monoclonal |

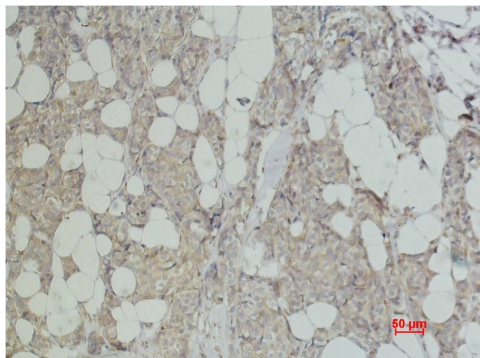
Background

| | |
|-------------------------|---|
| Alternative Names | |
| Observed band | 138 |
| Human Gene ID | 2064 |
| Human Swiss-Prot Number | P04626 |
| Background | ErbB 2 is a receptor tyrosine kinase of the ErbB 2 family. It is closely related in structure to the epidermal growth factor receptor. ErbB 2 oncoprotein is detectable in a proportion of breast and other adenocarcinomas, as well as transitional cell carcinomas. In the case of breast cancer, expression determined by immunohistochemistry has been shown to be associated with poor prognosis.. |

Selected Validation Data



Western blot analysis of 1) HeLa, 2) 293, 3) Jurkat, with ErbB-2 Mouse mAb diluted at 1:2,000.



Immunohistochemical analysis of paraffin-embedded Human Breast Carcinoma using ErbB-2/HER-2 Mouse mAb diluted at 1:500.