

ERCC1 Mouse Monoclonal Antibody(4F12)

Catalog No: RA10356

Basic Information

Host species	Mouse
Applications	WB, IHC
Species Cross-Reactivity	H
Specificity	ERCC1 Mouse Monoclonal antibody detects endogenous ERCC1 proteins.
Recommended dilutions	WB: 1:1,000 IHC: 1:100-200 Optimal dilutions should be determined by the end user.

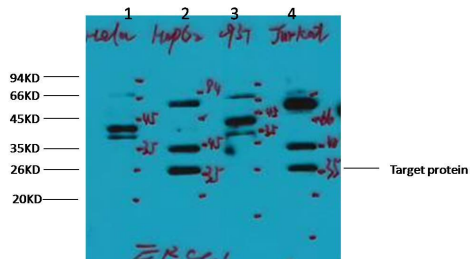
Applications

Formulation	PBS, pH 7.4, containing 0.02% sodium azide as Preservative and 50% Glycerol.
Storage	Store at -20°C. Avoid repeated freeze-thaw cycles.
Concentration	1 mg/ml
Clonality	Monoclonal

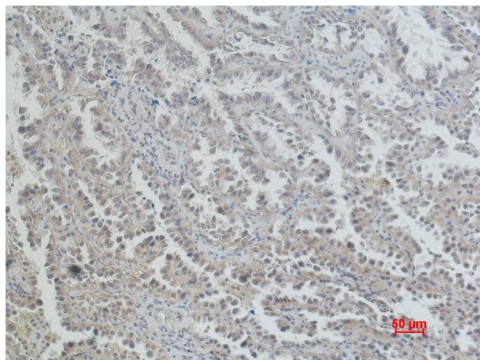
Background

Alternative Names	
Observed band	36
Human Gene ID	2067
Human Swiss-Prot Number	P07992
Background	The function of the ERCC1 protein is predominantly in nucleotide excision repair (NER) of damaged DNA. NER is one of five separate DNA repair mechanisms that also include recombination repair, base excision repair, mismatch repair, and translesion synthesis.

Selected Validation Data



Western blot analysis of 1) HeLa, 2) HepG2, 3) 293T, 4) Jurkat, with ERCC1 Mouse mAb diluted at 1:2,000.



Immunohistochemical analysis of paraffin-embedded Human Lung Carcinoma using ERCC1 Mouse mAb diluted at 1:200.