

# AFP alpha 1 Fetoprotein Mouse Monoclonal Antibody(17C5)

## Catalog No: RA10353

### Basic Information

Host species	Mouse
Applications	WB, IHC
Species Cross-Reactivity	H
Specificity	AFP Mouse Monoclonal antibody detects endogenous AFP proteins.
Recommended dilutions	WB: 1:2,000                      IHC: 1:200-500 Optimal dilutions should be determined by the end user.

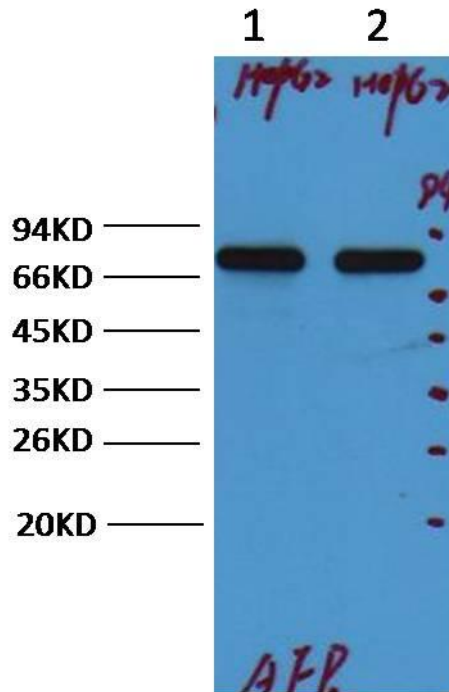
### Applications

Formulation	PBS, pH 7.4, containing 0.02% sodium azide as Preservative and 50% Glycerol.
Storage	Store at -20°C. Avoid repeated freeze-thaw cycles.
Concentration	1 mg/ml
Clonality	Monoclonal

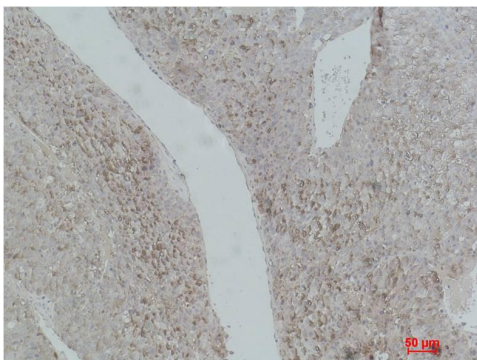
### Background

Alternative Names	
Observed band	70
Human Gene ID	174
Human Swiss-Prot Number	P02771
Background	alpha-1-fetoprotein (AFP) is a protein that in humans is encoded by the AFP gene. The AFP gene is located on the q arm of chromosome 4 (4q25).AFP is a major plasma protein produced by the yolk sac and the liver during fetal development that is thought to be the fetal form of serum albumin. AFP binds to copper, nickel, fatty acids and bilirubin and is found in monomeric, dimeric and trimeric forms.

Selected Validation Data



Western blot analysis of HepG2, with AFP Mouse mAb diluted at 1:2,000.



Immunohistochemical analysis of paraffin-embedded Human Hepatocarcinoma using AFP Mouse mAb diluted at 1:500.