

SPHK2 Mouse Monoclonal Antibody(7H5)

Catalog No: RA10350

Basic Information

Host species	Mouse
Applications	WB,IHC
Species Cross-Reactivity	H,M,R
Specificity	Antibody can detects endogenous SPHK2 protein.
Recommended dilutions	WB:1:1,000-2,000 IHC:1:200-500 Optimal dilutions should be determined by the end user.

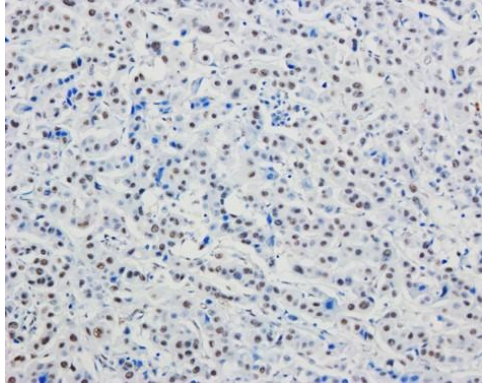
Applications

Formulation	Antigen Affinity Purified IgG in PBS, pH 7.4, containing 0.02% sodium azide as Preservative and 50% Glycerol.
Storage	Store at -20°C. Avoid repeated freeze-thaw cycles.
Concentration	1 mg/ml
Clonality	Monoclonal

Background

Alternative Names	sphingosine kinsase2, SK 2, SPK 2
Observed band	Species independent
Human Gene ID	56848
Human Swiss-Prot Number	Q9NRA0
Background	sphingosine kinase 2(SPHK2) Homo sapiens This gene encodes one of two sphingosine kinase isozymes that catalyze the phosphorylation of sphingosine into sphingosine 1-phosphate. Sphingosine 1-phosphate mediates many cellular processes including migration, proliferation and apoptosis, and also plays a role in several types of cancer by promoting angiogenesis and tumorigenesis.

Selected Validation Data



Immunohistochemical analysis of paraffin-embedded Human Breast Carcinoma Tissue using SPHK2 Mouse monoclonal antibody diluted at 1:200.