

P38 Mouse Monoclonal Antibody(2F12)

Catalog No: RA10349

Basic Information

Host species	Mouse
Applications	IHC
Species Cross-Reactivity	H,R,M
Specificity	The Antibody can detects endogenous p38 proteins.
Recommended dilutions	IHC: 1:1,000-2,000 Optimal dilutions should be determined by the end user.

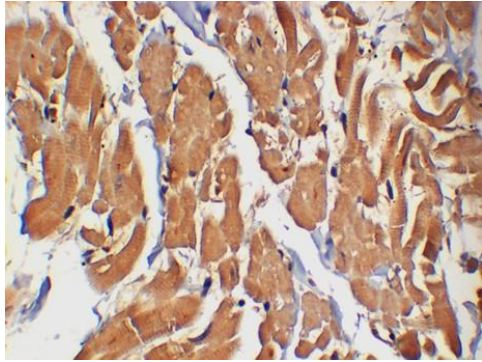
Applications

Formulation	PBS, pH 7.4, containing 0.02% sodium azide as Preservative and 50% Glycerol.
Storage	Store at -20°C. Avoid repeated freeze-thaw cycles.
Concentration	1 mg/ml
Clonality	Monoclonal

Background

Alternative Names	MAP kinase p38 alpha, p38 MAP kinase, CSBP , RK, MAPK 14 antibody
Observed band	~40
Human Gene ID	1432
Human Swiss-Prot Number	Q16539
Background	p38 MAP kinase (MAPK) is the mammalian orthologue of the yeast HOG kinase that participates in a signaling cascade controlling cellular responses to cytokines and stress. Isoforms p38 α , β , γ and δ have been identified. p38 MAPK is activated by a variety of cellular stresses including osmotic shock, inflammatory cytokines, lipopolysaccharide (LPS), UV light, and growth factors.

Selected Validation Data



Western blot analysis of 1)Hela Cell, 2) Mouse Liver Tissue ,3)
Rat Kidney Tissue Lysate using P38 Mouse Monoclonal mAb
diluted at 1:2,000.