

ACE2 Mouse Monoclonal Antibody(2C1)

Catalog No: RA10348

Basic Information

Host species	Mouse
Applications	WB, IHC, IF
Species Cross-Reactivity	H, M, R
Specificity	Antibody can detects endogenous Human ACE2 protein, predict Cross-Reactivity with Mouse, Rat.
Recommended dilutions	WB:1:1,000-5,000 IF:1:200-500 IHC1:200-500 Optimal dilutions should be determined by the end user.

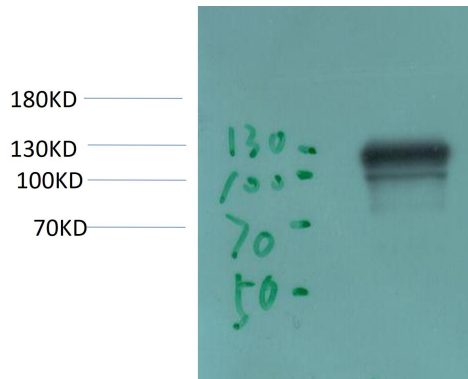
Applications

Formulation	Antigen Affinity Purified IgG in PBS, pH 7.4, containing 0.02% sodium azide as Preservative and 50% Glycerol.
Storage	Store at -20°C. Avoid repeated freeze-thaw cycles.
Concentration	1 mg/ml
Clonality	Monoclonal

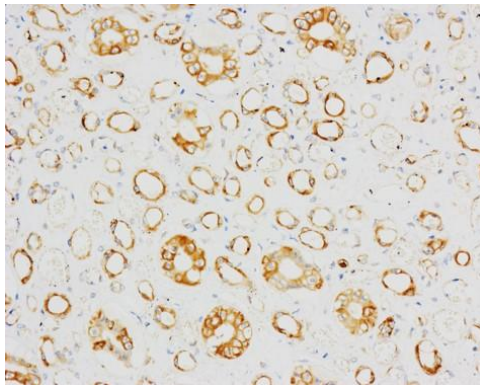
Background

Alternative Names	ACE related carboxypeptidase, ACEH, Angiotensin converting enzyme 2, EC 3.4.17, DKFZP433A014
Observed band	120-135
Human Gene ID	859272
Human Swiss-Prot Number	Q9BYF1
Background	angiotensin I converting enzyme 2(ACE2) Homo sapiens The protein encoded by this gene belongs to the angiotensin-converting enzyme family of dipeptidyl carboxydipeptidases and has considerable homology to human angiotensin 1 converting enzyme. This secreted protein catalyzes the cleavage of angiotensin I into angiotensin 1-9, and angiotensin II into the vasodilator angiotensin 1-7. The organ- and cell-specific expression of this gene suggests that it may play a role in the regulation of cardiovascular and renal function, as well as fertility. In addition, the encoded protein is a functional receptor for the spike glycoprotein of the human coronaviruses SARS and HCoV-NL63.

Selected Validation Data



Western blot analysis of 293T Transfected ACE2 Cell Lysate using ACE2 Mouse Monoclonal Antibody diluted at 1:50,000.



Immunohistochemical analysis of paraffin-embedded Human Kidney Tissue using ACE2 Mouse monoclonal antibody diluted at 1:200.