

Maspin Mouse Monoclonal Antibody(1D7)

Catalog No: RA10343

Basic Information

Host species	Mouse
Applications	WB
Species Cross-Reactivity	H, M, R
Specificity	Antibody can detects endogenous Maspin proteins.
Recommended dilutions	WB: 1:1,000-2,000 Optimal dilutions should be determined by the end user.

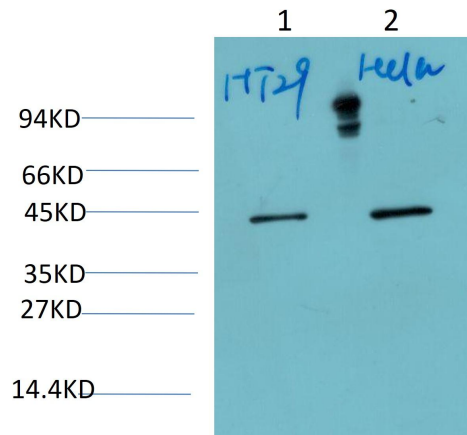
Applications

Formulation	Antigen Affinity Purified Rabbit IgG, 1mg/ml in PBS pH7.4, containing 0.02% sodium azide as Preservative and 50% Glycerol.
Storage	Store at -20°C. Avoid repeated freeze-thaw cycles.
Concentration	1 mg/ml
Clonality	Monoclonal

Background

Alternative Names	Serpin B5,peptidase inhibitor 5,PI-5
Observed band	~42
Human Gene ID	5629
Human Swiss-Prot Number	P36952
Background	function:Tumor suppressor. It blocks the growth, invasion, and metastatic properties of mammary tumors. As it does not undergo the S (stressed) to R (relaxed) conformational transition characteristic of active serpins, it exhibits no serine protease inhibitory ctivity.,similarity:Belongs to the serpin family. Ov-serpin subfamily.,tissue specificity:Normal mammary epithelial cells.

Selected Validation Data



Western blot analysis of 1)HT-29 Cell, 2) HeLa Cell Lysate using
Maspin Mouse Monoclonal Antibody diluted at 1:2,000.