

HSP60 Mouse Monoclonal Antibody(2D3)

Catalog No: RA10335

Basic Information

Host species	Mouse
Applications	WB
Species Cross-Reactivity	H, M,R
Specificity	Antibody can detects endogenous HSP60 proteins.
Recommended dilutions	WB: 1:1,000-2,000 Optimal dilutions should be determined by the end user.

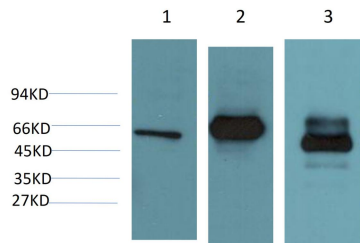
Applications

Formulation	PBS, pH 7.4, containing 0.02% sodium azide as Preservative and 50% Glycerol.
Storage	Store at -20°C. Avoid repeated freeze-thaw cycles.
Concentration	1 mg/ml
Clonality	Monoclonal

Background

Alternative Names	60kDa chaperonin, Chaperonin 60, GROEL, HLD4, SPG13, Mitochondrial matrix protein P1
Observed band	60
Human Gene ID	3329
Human Swiss-Prot Number	P10809
Background	HSP60 Implicated in mitochondrial protein import and macromolecular assembly. May facilitate the correct folding of imported proteins. May also prevent misfolding and promote the refolding and proper assembly of unfolded polypeptides generated under stress conditions in the mitochondrial matrix.

Selected Validation Data



Western blot analysis of 1) 293 Cell, 2) Mouse Kidney Tissue, 3) Rat Heart Tissue Lysate using HSP60 Mouse mAb diluted at 1:2,000.