

NSE Mouse Monoclonal Antibody(13E2)

Catalog No: RA10334

Basic Information

Host species	Mouse
Applications	WB, IHC
Species Cross-Reactivity	H,M,R
Specificity	The NSE Mouse Monoclonal antibody detects endogenous NSE proteins.
Recommended dilutions	WB: 1:2,000 IHC: 1:200 Optimal dilutions should be determined by the end user.

Applications

Formulation	PBS, pH 7.4, containing 0.02% sodium azide as Preservative and 50% Glycerol.
Storage	Store at -20°C. Avoid repeated freeze-thaw cycles.
Concentration	1 mg/ml
Clonality	Monoclonal

Background

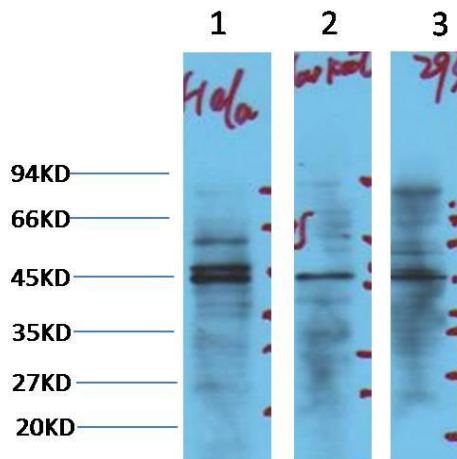
Alternative Names

Observed band	47
Human Gene ID	2026
Human Swiss-Prot Number	P09104

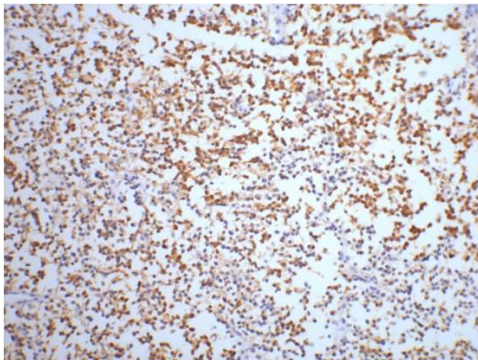
Background

Enolase is a glycolytic enzyme catalyzing the reaction pathway between 2 phospho glycerate and phosphoenol pyruvate. In mammals, enolase molecules are dimers composed of three distinct subunits (alpha, beta and gamma). The alpha subunit is expressed in most tissues and the beta subunit only in muscle. The gamma subunit is expressed primarily in neurons, in normal and in neoplastic neuroendocrine cells. NSE (neuron specific enolase) is found in elevated concentrations in plasma in certain neoplasias. These include pediatric neuroblastoma and small cell lung cancer. Coexpression of NSE and chromogranin A is common in neuroendocrine neoplasms.

Selected Validation Data



Western blot analysis of 1) Hela, 2) Jurkat, 3) 293T cell lysates with NSE mAb diluted at 1:3,000.



IHC staining of Human small cell carcinoma of lung tissue with NSEmouse mAb(13E2) diluted at 1:200.