

Carcinoembryonic Antigen CEA Mouse Monoclonal Antibody (10E1)

Catalog No: RA10331

Basic Information

Host species	Mouse
Applications	IHC
Species Cross-Reactivity	H
Specificity	The CEA Mouse Monoclonal Antibody detects endogenous CEA proteins.
Recommended dilutions	IHC: 1:200 Optimal dilutions should be determined by the end user.

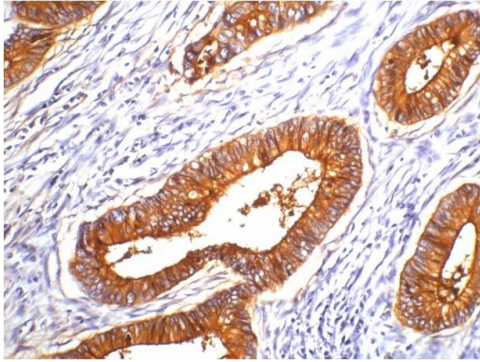
Applications

Formulation	PBS, pH 7.4, containing 0.02% sodium azide as Preservative and 50% Glycerol.
Storage	Store at -20°C. Avoid repeated freeze-thaw cycles.
Concentration	1 mg/ml
Clonality	Monoclonal

Background

Alternative Names	
Observed band	113
Human Gene ID	1048
Human Swiss-Prot Number	P06731
Background	CEA is synthesised during development in the fetal gut, and is re-expressed in increased amounts in intestinal carcinomas and several other tumors. Antibodies to CEA are useful in identifying the origin of various metastatic adenocarcinomas and in distinguishing pulmonary adenocarcinomas (60 to 70% are CEA+) from pleural mesotheliomas (rarely or weakly CEA+).

Selected Validation Data



IHC staining of human colon cancer tissue with CEA mouse mAb(10E1) diluted at 1:200.