

# CD21 Mouse Monoclonal Antibody (2C5)

## Catalog No: RA10330

### Basic Information

Host species	Mouse
Applications	IHC
Species Cross-Reactivity	H,M,R
Specificity	The CD21 antibody detects endogenous CD21 proteins.
Recommended dilutions	IHC: 1:200 Optimal dilutions should be determined by the end user.

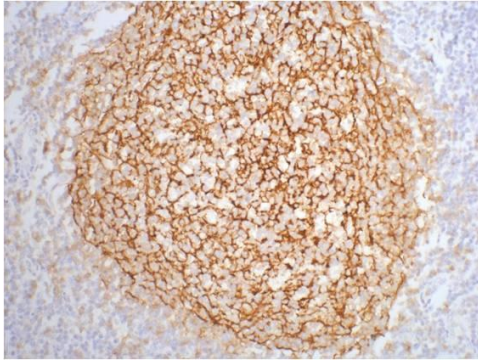
### Applications

Formulation	PBS, pH 7.4, containing 0.02% sodium azide as Preservative and 50% Glycerol.
Storage	Store at -20°C. Avoid repeated freeze-thaw cycles.
Concentration	1 mg/ml
Clonality	Monoclonal

### Background

Alternative Names	
Observed band	113
Human Gene ID	1380
Human Swiss-Prot Number	P20023
Background	CD21 also known as complement receptor 2 (CR2), C3d receptor or EBV receptor is a 140 kDa protein. CD21 is a glycosylated type I transmembrane protein consisting of an extracellular face of a series of 15 or 16 CCP domains. CD21 is the receptor for complement components C3d and iC3b as well as the Epstein-Barr virus (EBV) glycoprotein gp350/220. The soluble CD21 (sCD21) was shown to efficiently trigger CD23 signalling pathways in human monocytes. By inducing release of proinflammatory cytokines and upregulating expression of molecules involved in antigen presentation, sCD21 modulates critical monocyte functions that may be relevant to allergic and inflammatory disorders.

Selected Validation Data



IHC staining of human tonsil tissue with CD21 mouse mAb(2C5)  
diluted at 1:200.