

CDX2 Mouse Monoclonal Antibody (14H6)

Catalog No: RA10327

Basic Information

Host species	Mouse
Applications	WB, IHC
Species Cross-Reactivity	H, M, R
Specificity	The CDX2 Mouse Monoclonal antibody detects endogenous CDX2 proteins.
Recommended dilutions	WB: 1:1000 IHC: 1:200 Optimal dilutions should be determined by the end user.

Applications

Formulation	PBS, pH 7.4, containing 0.02% sodium azide as Preservative and 50% Glycerol.
Storage	Store at -20°C. Avoid repeated freeze-thaw cycles.
Concentration	1 mg/ml
Clonality	Monoclonal

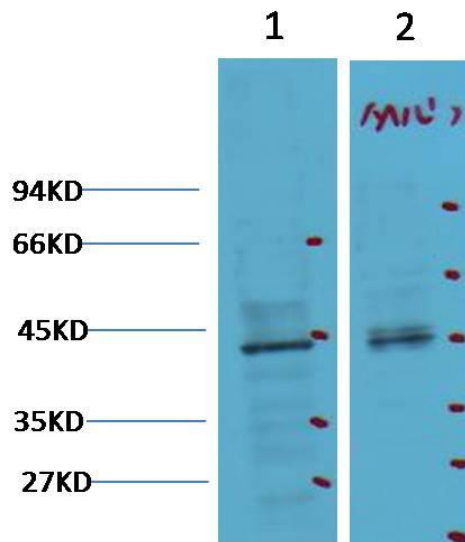
Background

Alternative Names	
Observed band	42
Human Gene ID	1045
Human Swiss-Prot Number	Q99626

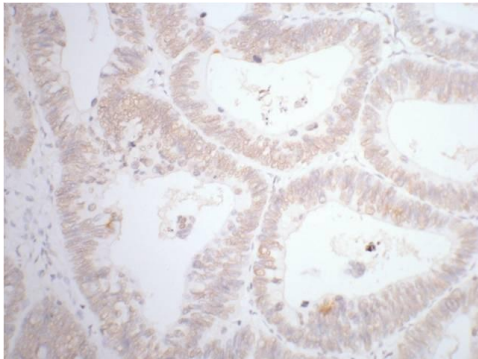
Background

CDX2 is a caudal type homeobox gene that encodes an intestine-specific transcription factor that is expressed early in intestinal development and may be involved in the regulation of proliferation and differentiation of intestinal epithelial cells. It is expressed in the nuclei of epithelial cells throughout the intestine, from duodenum to rectum. The CDX2 protein is expressed in primary and metastatic colorectal carcinomas and has also been demonstrated in the intestinal metaplasia of the stomach and intestinal-type gastric cancer, while it is not expressed in the normal gastric mucosa. Studies have shown that CDX2 is superior marker compared to CK20.

Selected Validation Data



Western blot analysis of 1) 293T, 2) Mouse Heart tissue with CDX2 mAb diluted at 1:2,000.



IHC staining of human rectal cancer tissue with CDX2 mouse mAb(14H6) diluted at 1:200.