

# CK16 Mouse Monoclonal Antibody (6F6)

## Catalog No: RA10326

### Basic Information

Host species	Mouse
Applications	IHC
Species Cross-Reactivity	H, M, R
Specificity	The CK16 Mouse Monoclonal antibody detects endogenous CK16 proteins.
Recommended dilutions	IHC: 1:200 Optimal dilutions should be determined by the end user.

### Applications

Formulation	PBS, pH 7.4, containing 0.02% sodium azide as Preservative and 50% Glycerol.
Storage	Store at -20°C. Avoid repeated freeze-thaw cycles.
Concentration	1 mg/ml
Clonality	Monoclonal

### Background

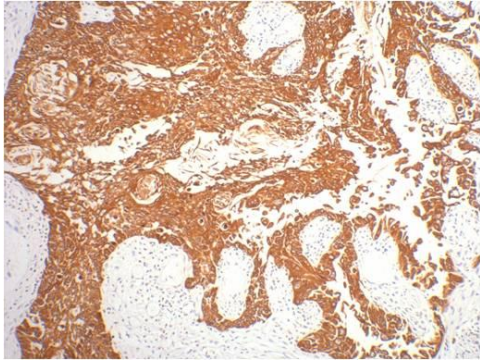
#### Alternative Names

Observed band	51
Human Gene ID	3868
Human Swiss-Prot Number	P08779

#### Background

Keratin 16 is expressed in keratinocytes, which are undergoing rapid turnover in the suprabasal region (also known as hyperproliferation-related keratins). Keratin 16 is absent in normal breast tissue and in noninvasive breast carcinomas. Only 10% of the invasive breast carcinomas show diffuse or focal positivity. Reportedly, a relatively high concordance was found between the carcinomas immunostaining with the basal cell and the hyperproliferation-related keratins, but not between these markers and the proliferation marker Ki-67. This supports the conclusion that basal cells in breast cancer may show extensive proliferation, and that absence of Ki-67 staining does not mean that (tumor) cells are not proliferating.

Selected Validation Data



IHC staining of human gullet cancer tissue with CK16 mouse mAb(6F6) diluted at 1:200.