

# CK8 Mouse Monoclonal Antibody (8G8)

## Catalog No: RA10325

### Basic Information

Host species	Mouse
Applications	WB, IHC
Species Cross-Reactivity	H,M,R
Specificity	The CK8 Mouse Monoclonal antibody detects endogenous CK8 proteins.
Recommended dilutions	WB: 1:2,000-5,000    IHC: 1:200 Optimal dilutions should be determined by the end user.

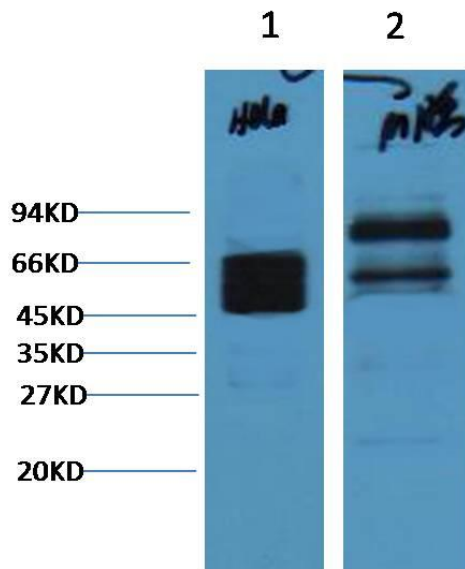
### Applications

Formulation	PBS, pH 7.4, containing 0.02% sodium azide as Preservative and 50% Glycerol.
Storage	Store at -20°C. Avoid repeated freeze-thaw cycles.
Concentration	1 mg/ml
Clonality	Monoclonal

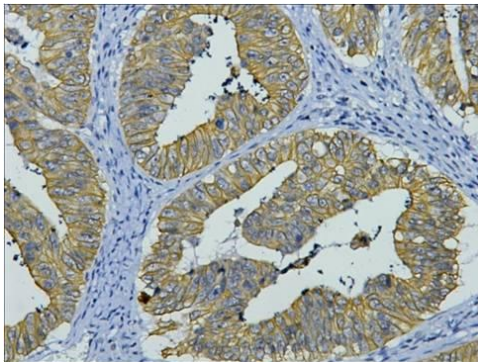
### Background

Alternative Names	
Observed band	54
Human Gene ID	3856
Human Swiss-Prot Number	P05787
Background	Cytokeratin 8 belongs to the type B (basic) subfamily of high molecular weight keratins and exists in combination with cytokeratin 18. Cytokeratin 8 is primarily found in the non squamous epithelia and is present in majority of adenocarcinomas and ductal carcinomas. It is absent in squamous cell carcinomas.

Selected Validation Data



Western blot analysis of 1) HeLa, 2) Mouse Brain with CK8 mAb diluted at 1:4,000.



IHC staining of human colon cancer tissue with CK8 mouse mAb(8G8) diluted at 1:200.