

# CK7 Mouse Monoclonal Antibody (12D7)

## Catalog No: RA10324

### Basic Information

Host species	Mouse
Applications	WB, IHC, IP
Species Cross-Reactivity	H, M,R
Specificity	The CK7 Mouse Monoclonal antibody detects endogenous CK7 proteins.
Recommended dilutions	WB: 1:1,000-2,000    IHC: 1:200    IP:1:200 Optimal dilutions should be determined by the end user.

### Applications

Formulation	PBS, pH 7.4, containing 0.02% sodium azide as Preservative and 50% Glycerol.
Storage	Store at -20°C. Avoid repeated freeze-thaw cycles.
Concentration	1 mg/ml
Clonality	Monoclonal

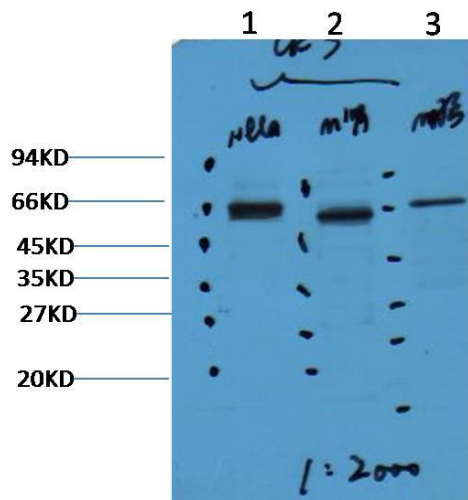
### Background

Alternative Names	
Observed band	54
Human Gene ID	3855
Human Swiss-Prot Number	P08729

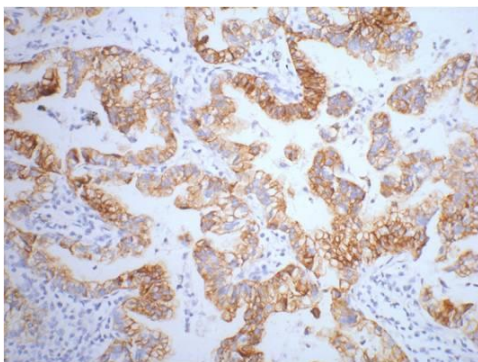
Background

Cytokeratin 7 is a 54kD intermediate filament protein found in a variety of glandularepithelia. Cytokeratin 7 has been found in columnar and glandular epithelium of the lung, cervix, breast, bile ducts and larger collecting ducts of the kidney. It is present in the transitional epithelium of bladder as well as ovarian and lungepithelia, and occasionally staining of blood vessel cell walls, particularly endothelial cells, may be observed. However, Cytokeratin 7 is not expressed by epithelial cells of the gastrointestinal tract, colon or prostate. Keratin 7 is often co expressed with keratin 19.

Selected Validation Data



Western blot analysis of 1) HeLa, 2) Mouse Kidney, 3) Mouse Brain with CK7 mAb diluted at 1:2,000.



IHC staining of human lung cancer tissue with CK7 mouse mAb(12D7) diluted at 1:200.