

Myd88 Mouse Monoclonal Antibody(2H12)

Catalog No: RA10310

Basic Information

Host species	Mouse
Applications	IHC
Species Cross-Reactivity	H, R, M
Specificity	The Antibody can detects endogenous Myd 88 proteins.
Recommended dilutions	IHC: 1:100-200 Optimal dilutions should be determined by the end user.

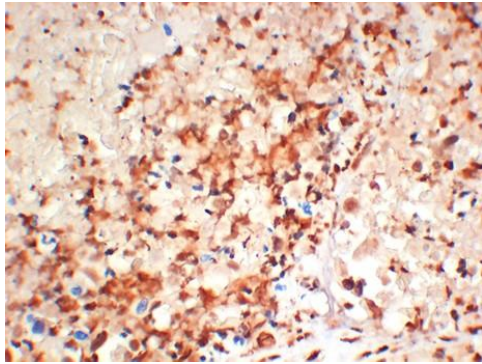
Applications

Formulation	Antigen Affinity Purified Rabbit IgG, 1mg/ml in PBS pH7.4, containing 0.02% sodium azide as Preservative and 50% Glycerol.
Storage	Store at -20°C. Avoid repeated freeze-thaw cycles.
Concentration	1 mg/ml
Clonality	Monoclonal

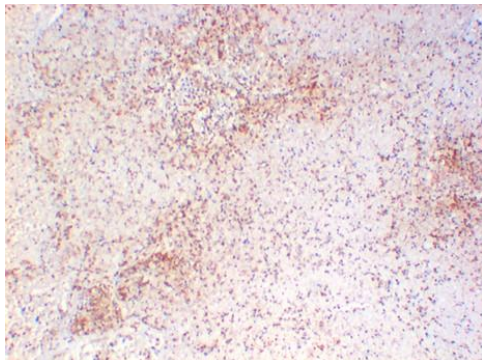
Background

Alternative Names	MYD88, myeloid differentiation primary response protein
Observed band	33
Human Gene ID	4615
Human Swiss-Prot Number	Q99836
Background	myeloid differentiation primary response 88(MYD88) Homo sapiens This gene encodes a cytosolic adapter protein that plays a central role in the innate and adaptive immune response. This protein functions as an essential signal transducer in the interleukin-1 and Toll-like receptor signaling pathways. These pathways regulate that activation of numerous proinflammatory genes. The encoded protein consists of an N-terminal death domain and a C-terminal Toll-interleukin1 receptor domain. Patients with defects in this gene have an increased susceptibility to pyogenic bacterial infections

Selected Validation Data



Immunohistochemical analysis of paraffin-embedded Human Lung Carcinoma Tissue using Myd 88 Mouse Monoclonal antibody diluted at 1:200.



Immunohistochemical analysis of paraffin-embedded Human Lung Carcinoma Tissue using Myd 88 Mouse Monoclonal antibody diluted at 1:200.