

# p38 Mouse Monoclonal Antibody(4G2)

## Catalog No: RA10309

### Basic Information

Host species	Mouse
Applications	WB
Species Cross-Reactivity	H,R,M
Specificity	The Antibody can detects endogenous p38 proteins.
Recommended dilutions	WB: 1:1,000-2,000 Optimal dilutions should be determined by the end user.

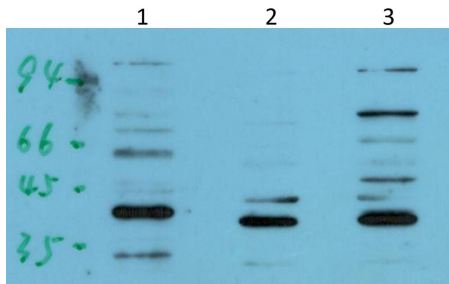
### Applications

Formulation	PBS, pH 7.4, containing 0.02% sodium azide as Preservative and 50% Glycerol.
Storage	Store at -20°C. Avoid repeated freeze-thaw cycles.
Concentration	1 mg/ml
Clonality	Monoclonal

### Background

Alternative Names	MAP kinase p38 alpha, p38 MAP kinase, CSBP , RK, MAPK 14 antibody
Observed band	~40
Human Gene ID	1432
Human Swiss-Prot Number	Q16539
Background	p38 MAP kinase (MAPK) is the mammalian orthologue of the yeast HOG kinase that participates in a signaling cascade controlling cellular responses to cytokines and stress. Isoforms p38 $\alpha$ , $\beta$ , $\gamma$ and $\delta$ have been identified. p38 MAPK is activated by a variety of cellular stresses including osmotic shock, inflammatory cytokines, lipopolysaccharide (LPS), UV light, and growth factors.

## Selected Validation Data



Western blot analysis of 1)Hela Cell, 2) Mouse Liver Tissue ,3)  
Rat Kidney Tissue Lysate using P38 Mouse Monoclonal mAb  
diluted at 1:2,000.