

# I κ B α Mouse Monoclonal Antibody(2A5)

## Catalog No: RA10305

### Basic Information

Host species	Mouse
Applications	WB, IHC
Species Cross-Reactivity	H, R, M
Specificity	The Antibody can detects endogenous IκB α proteins.
Recommended dilutions	WB: 1:1,000-2,000    IHC: 1:100-200 Optimal dilutions should be determined by the end user.

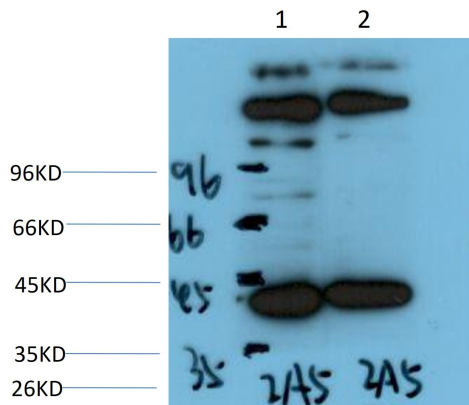
### Applications

Formulation	Antigen Affinity Purified IgG in PBS, pH 7.4, containing 0.02% sodium azide as Preservative and 50% Glycerol.
Storage	Store at -20°C. Avoid repeated freeze-thaw cycles.
Concentration	1 mg/ml
Clonality	Monoclonal

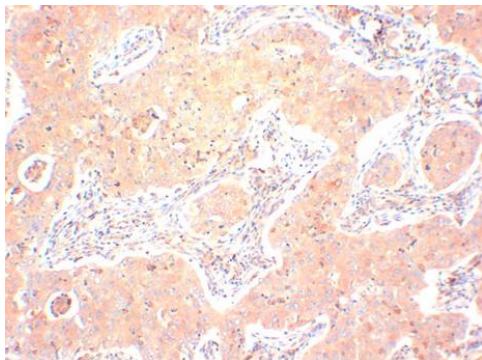
### Background

Alternative Names	I kappa B alpha antibody, IκB-alpha antibody, IKBA antibody, MAD3 antibody, NFκB inhibitor antibody
Observed band	40
Human Gene ID	4792
Human Swiss-Prot Number	P25963
Background	Inhibits the activity of dimeric NF-kappa-B/REL complexes by trapping REL dimers in the cytoplasm through masking of their nuclear localization signals. IκBα phosphorylation and resulting Rel-dependent transcription are activated by a highly diverse group of extracellular signals including inflammatory cytokines, growth factors, and chemokines.

## Selected Validation Data



Western blot analysis of 1)Hela Cell, 2) Mouse Brain Tissue Lysate using I $\kappa$ B  $\alpha$  Mouse Monoclonal mAb diluted at 1:2,000.



Immunohistochemical analysis of paraffin-embedded Human Lung Carcinoma Tissue using I $\kappa$ B  $\alpha$  Mouse Monoclonal antibody diluted at 1:200.