

HO-1 Mouse Monoclonal Antibody(Mix-mA)

Catalog No: RA10302

Basic Information

Host species	Mouse
Applications	WB
Species Cross-Reactivity	H,R,M
Specificity	The antibody can detects endogenous HO-1 proteins.
Recommended dilutions	WB: 1:1,000-2,000 Optimal dilutions should be determined by the end user.

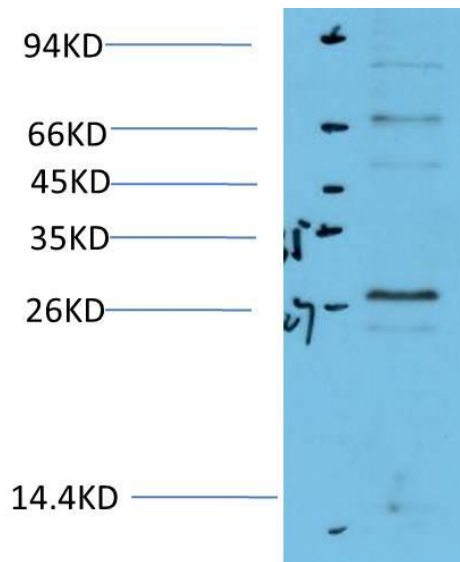
Applications

Formulation	Antigen Affinity Purified IgG in PBS, pH 7.4, containing 0.02% sodium azide as Preservative and 50% Glycerol.
Storage	Store at -20°C. Avoid repeated freeze-thaw cycles.
Concentration	1 mg/ml
Clonality	Monoclonal

Background

Alternative Names	Heme Oxygenase 1
Observed band	28
Human Gene ID	3162
Human Swiss-Prot Number	P09601
Background	Catalytic activity:Heme + 3 AH(2) + 3 O(2) = biliverdin + Fe(2+) + CO + 3 A + 3 H(2)O.,function:Heme oxygenase cleaves the heme ring at the alpha methene bridge to form biliverdin. Biliverdin is subsequently converted to bilirubin by biliverdin reductase. Under physiological conditions, the activity of heme oxygenase is highest in the spleen, where senescent erythrocytes are sequestered and destroyed.,induction:Heme oxygenase 1 activity is highly inducible by its substrate heme and by various non-heme substances such as heavy metals, bromobenzene, endotoxin, oxidizing agents and UVA.,similarity:Belongs to the heme oxygenase family.

Selected Validation Data



Western blot analysis of 3T3 Cell Lysate using HO-1 Mouse
Monoclonal mAb diluted at 1:2,000.