

P27 Kip1 Mouse Monoclonal Antibody(1A7)

Catalog No: RA10298

Basic Information

Host species	Mouse
Applications	WB
Species Cross-Reactivity	H, R, M
Specificity	Antibody can detects endogenous p27 Kip1 protein.
Recommended dilutions	WB: 1:2,000-5,000 Optimal dilutions should be determined by the end user.

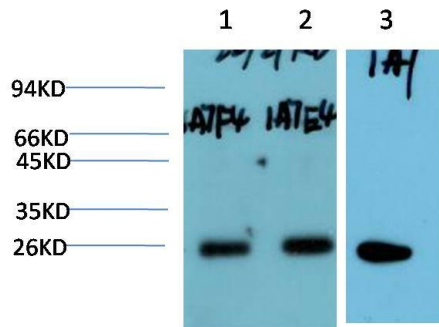
Applications

Formulation	PBS, pH 7.4, containing 0.02% sodium azide as Preservative and 50% Glycerol.
Storage	Store at -20°C. Avoid repeated freeze-thaw cycles.
Concentration	1 mg/ml
Clonality	Monoclonal

Background

Alternative Names	CDKN1B,CDKN4,Kip1,p27,Cyclin dependent kinase inhibitor 1b
Observed band	27
Human Gene ID	1027
Human Swiss-Prot Number	P45627
Background	Cyclin dependent kinase inhibitor 1B(CDKN1B) Homo sapiens This gene encodes a cyclin-dependent kinase inhibitor, which shares a limited similarity with CDK inhibitor CDKN1A/p21. The encoded protein binds to and prevents the activation of cyclin E-CDK2 or cyclin D-CDK4 complexes, and thus controls the cell cycle progression at G1. The degradation of this protein, which is triggered by its CDK dependent phosphorylation and subsequent ubiquitination by SCF complexes, is required for the cellular transition from quiescence to the proliferative state.

Selected Validation Data



Western blot analysis of 1)MCF7 Cell, 2) HepG2 Cell, 3) C2C12 Cell Lysate using p27 Kip1 Mouse Monoclonal mAb diluted at 1:2,000.