

TRP2 DCT Mouse Monoclonal Antibody(2A10)

Catalog No: RA10295

Basic Information

Host species	Mouse
Applications	WB,IHC
Species Cross-Reactivity	H,M,R
Specificity	Antibody can detects TRP2/DCT proteins.
Recommended dilutions	WB: 1:1,000-2,000IHC:1:100-200 Optimal dilutions should be determined by the end user.

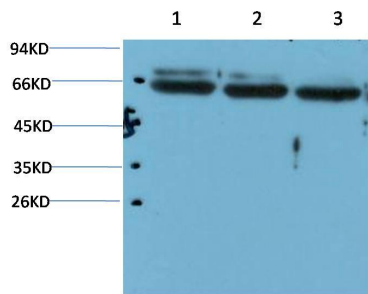
Applications

Formulation	PBS, pH 7.4, containing 0.02% sodium azide as Preservative and 50% Glycerol.
Storage	Store at -20°C. Avoid repeated freeze-thaw cycles.
Concentration	1 mg/ml
Clonality	Monoclonal

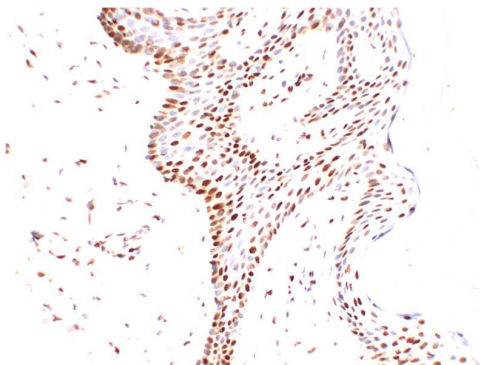
Background

Alternative Names	TYRP2;L-dopachrome tautomerase;DT;L-dopachrome Delta-isomerase;Tyrosinase-related protein 2;TRP2
Observed band	~60
Human Gene ID	1638
Human Swiss-Prot Number	P40126
Background	Catalytic activity:L-dopachrome = 5,6-dihydroxyindole-2-carboxylate.,cofactor: Binds 2 zinc ions per subunit.,function:Involved in regulating eumelanin and pheomelanin levels.,pathway:Pigment biosynthesis; melanin biosynthesis.,similarity:Belongs to the tyrosinase family.,subunit:Tyrosinase, TYRP1 and TYRP2 may form a multienzyme complex.

Selected Validation Data



Western blot analysis of 1) Human Brain, 2) Mouse Brain, 3) Rat Brain Tissue Lysate using TRP2/DCT Mouse Monoclonal mAb diluted at 1:5,000.



Immunohistochemical analysis of paraffin-embedded Human Skin Tissue using TRP2/DCT Mouse Monoclonal antibody diluted at 1:200.