

Peripherin Mouse Monoclonal Antibody(3H1)

Catalog No: RA10292

Basic Information

Host species	Mouse
Applications	WB
Species Cross-Reactivity	H,R
Specificity	Antibody can detects recombinant Peripherin proteins.
Recommended dilutions	WB: 1:1,000-2,000 Optimal dilutions should be determined by the end user.

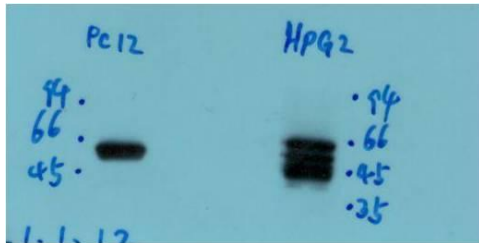
Applications

Formulation	PBS, pH 7.4, containing 0.02% sodium azide as Preservative and 50% Glycerol.
Storage	Store at -20°C. Avoid repeated freeze-thaw cycles.
Concentration	1 mg/ml
Clonality	Monoclonal

Background

Alternative Names	PRPH, NEF4, PRPH1, Neurofilament 4
Observed band	~55
Human Gene ID	5630
Human Swiss-Prot Number	P41219
Background	Peripherin(PRPH) Homo sapiens This gene encodes a cytoskeletal protein found in neurons of the peripheral nervous system. The encoded protein is a type III intermediate filament protein with homology to other cytoskeletal proteins such as desmin, and is a different protein that the peripherin found in photoreceptors. Mutations in this gene have been associated with susceptibility to amyotrophic lateral sclerosis.

Selected Validation Data



Western blot analysis of 1) PC12 Cell Lysate, 2) HepG2 Cell Lysate using Peripherin Mouse Monoclonal Antibody(3H1) diluted at 1:2,000.