

14-3-3 eta Mouse Monoclonal Antibody(5F2)

Catalog No: RA10281

Basic Information

Host species	Mouse
Applications	WB, IHC
Species Cross-Reactivity	H, M, R
Specificity	The antibody detects endogenous 14-3-3 eta proteins.
Recommended dilutions	WB 1:2,000-10,000 IHC 1:100-200 Optimal dilutions should be determined by the end user.

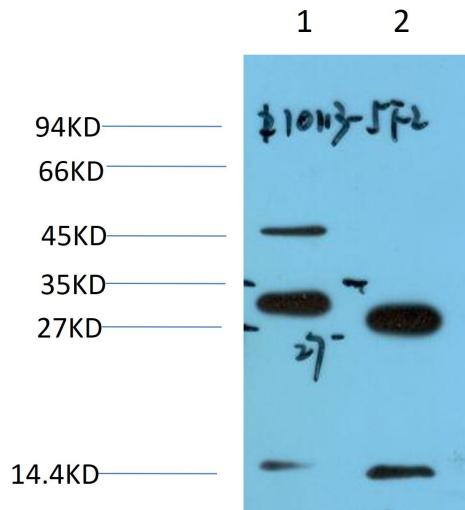
Applications

Formulation	PBS, pH 7.4, containing 0.02% sodium azide as Preservative and 50% Glycerol.
Storage	Store at -20°C. Avoid repeated freeze-thaw cycles.
Concentration	1 mg/ml
Clonality	Monoclonal

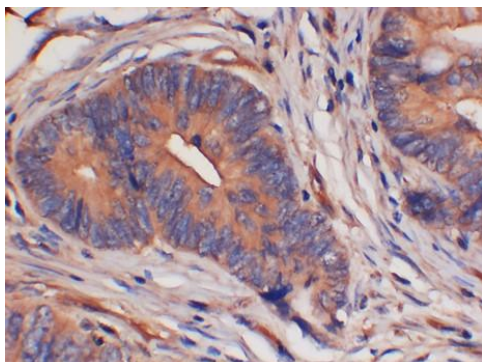
Background

Alternative Names	YWHAH; YWHA1; 14-3-3 protein eta; Protein AS1
Observed band	28
Human Gene ID	7533
Human Swiss-Prot Number	Q04917
Background	tyrosine 3-monooxygenase/tryptophan 5-monooxygenase activation protein eta(YWHAH) Homo sapiens This gene product belongs to the 14-3-3 family of proteins which mediate signal transduction by binding to phosphoserine-containing proteins. This highly conserved protein family is found in both plants and mammals, and this protein is 99% identical to the mouse, rat and bovine orthologs. This gene contains a 7 bp repeat sequence in its 5' UTR, and changes in the number of this repeat have been associated with early-onset schizophrenia and psychotic bipolar disorder.

Selected Validation Data



Western blot analysis of 1) Rat Brain Tissue, 2) HeLa Cell Lysate using 14-3-3 eta Mouse mAb diluted at 1:2000.



Immunohistochemical analysis of paraffin-embedded Human Colon Carcinoma Tissue using 14-3-3 eta Mouse mAb diluted at 1:200.