

Lamin B1(Cleaved) Mouse Monoclonal Antibody(7B7)

Catalog No: RA10275

Basic Information

Host species	Mouse
Applications	WB
Species Cross-Reactivity	H, R, M
Specificity	The Lamin B1 antibody can detects endogenous Cleaved Lamin B1 protein.
Recommended dilutions	WB: 1:1,000-2,000 Optimal dilutions should be determined by the end user.

Applications

Formulation	PBS, pH 7.4, containing 0.02% sodium azide as Preservative and 50% Glycerol.
Storage	Store at -20°C. Avoid repeated freeze-thaw cycles.
Concentration	1 mg/ml
Clonality	Monoclonal

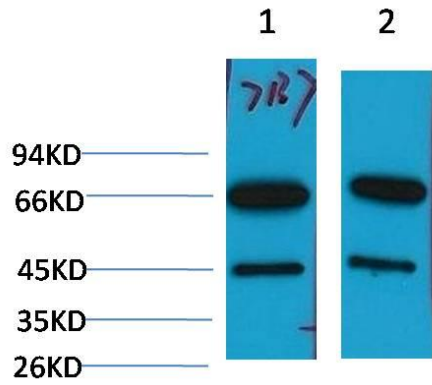
Background

Alternative Names	ADLD, LMB1, LMNB1, MGC111419, OTTHUMP00000159218
Observed band	68
Human Gene ID	7157
Human Swiss-Prot Number	P04637

Background

The nuclear lamina consists of a two-dimensional matrix of proteins located next to the inner nuclear membrane. The lamin family of proteins make up the matrix and are highly conserved in evolution. During mitosis, the lamina matrix is reversibly disassembled as the lamin proteins are phosphorylated. Lamin proteins are thought to be involved in nuclear stability, chromatin structure and gene expression. Vertebrate lamins consist of two types, A and B. This gene encodes one of the two B type proteins, B1.

Selected Validation Data



Western blot analysis of 1) 293T Cell Lysate, 2) Hela Cell Lysate,
using Lamin B1(Cleaved) Mouse mAb diluted at 1:2000.