

TFE3 Mouse Monoclonal Antibody(8B4)

Catalog No: RA10264

Basic Information

Host species	Mouse
Applications	IHC
Species Cross-Reactivity	H
Specificity	The antibody detects endogenous TFE3 proteins.
Recommended dilutions	IHC 1:100-200 Optimal dilutions should be determined by the end user.

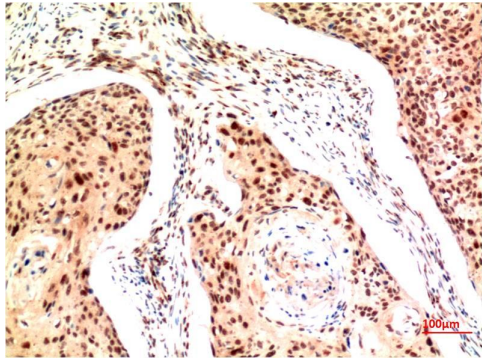
Applications

Formulation	PBS, pH 7.4, containing 0.02% sodium azide as Preservative and 50% Glycerol.
Storage	Store at -20°C. Avoid repeated freeze-thaw cycles.
Concentration	1 mg/ml
Clonality	Monoclonal

Background

Alternative Names	BHLHE33; Transcription factor E3; Class E basic helix-loop-helix protein 33; bHLHe33
Observed band	62
Human Gene ID	7030
Human Swiss-Prot Number	P19532
Background	transcription factor binding to IGHM enhancer 3(TFE3) Homo sapiens This gene encodes a basic helix-loop-helix domain-containing transcription factor that binds MUE3-type E-box sequences in the promoter of genes. The encoded protein promotes the expression of genes downstream of transforming growth factor beta (TGF-beta) signaling. This gene may be involved in chromosomal translocations in renal cell carcinomas and other cancers, resulting in the production of fusion proteins. Translocation partners include PRCC (papillary renal cell carcinoma), NONO (non-POU domain containing, octamer-binding), and ASPSCR1 (alveolar soft part sarcoma chromosome region, candidate 1), among other genes.

Selected Validation Data



Immunohistochemical analysis of paraffin-embedded Human Esophageal Squamous Cell Carcinoma Tissue using TFE3 Mouse mAb diluted at 1:200.