

PAX-8 Mouse Monoclonal Antibody(5B1)

Catalog No: RA10262

Basic Information

Host species	Mouse
Applications	WB
Species Cross-Reactivity	M
Specificity	The antibody detects endogenous PAX-8 proteins.
Recommended dilutions	WB 1:500-2,000 Optimal dilutions should be determined by the end user.

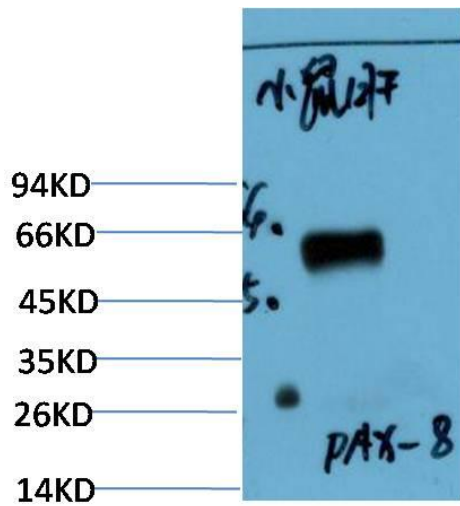
Applications

Formulation	PBS, pH 7.4, containing 0.02% sodium azide as Preservative and 50% Glycerol.
Storage	Store at -20°C. Avoid repeated freeze-thaw cycles.
Concentration	1 mg/ml
Clonality	Monoclonal

Background

Alternative Names	PAX8; Paired box protein Pax-8
Observed band	48
Human Gene ID	7849
Human Swiss-Prot Number	Q06710
Background	paired box 8(PAX8) Homo sapiens This gene encodes a member of the paired box (PAX) family of transcription factors. Members of this gene family typically encode proteins that contain a paired box domain, an octapeptide, and a paired-type homeodomain. This nuclear protein is involved in thyroid follicular cell development and expression of thyroid-specific genes. Mutations in this gene have been associated with thyroid dysgenesis, thyroid follicular carcinomas and atypical follicular thyroid adenomas. Alternatively spliced transcript variants encoding different isoforms have been described

Selected Validation Data



Western blot analysis of Mouse Liver Tissue Lysate using PAX-8
Mouse mAb diluted at 1:1000.