

# PAX-8 Mouse Monoclonal Antibody(2B11)

## Catalog No: RA10261

### Basic Information

Host species	Mouse
Applications	WB
Species Cross-Reactivity	M
Specificity	The antibody detects endogenous PAX-8 proteins.
Recommended dilutions	WB 1:500-2,000 Optimal dilutions should be determined by the end user.

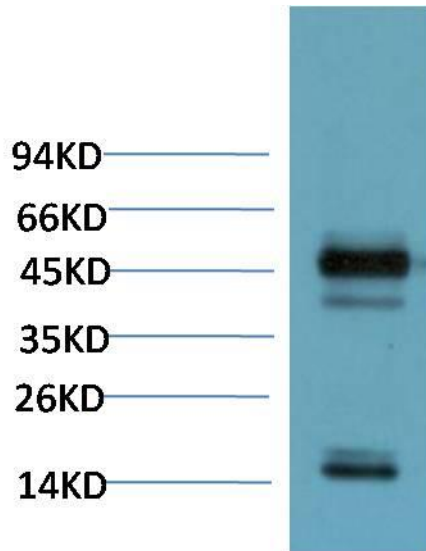
### Applications

Formulation	PBS, pH 7.4, containing 0.02% sodium azide as Preservative and 50% Glycerol.
Storage	Store at -20°C. Avoid repeated freeze-thaw cycles.
Concentration	1 mg/ml
Clonality	Monoclonal

### Background

Alternative Names	PAX8; Paired box protein Pax-8
Observed band	48
Human Gene ID	7849
Human Swiss-Prot Number	Q06710
Background	paired box 8(PAX8) Homo sapiens This gene encodes a member of the paired box (PAX) family of transcription factors. Members of this gene family typically encode proteins that contain a paired box domain, an octapeptide, and a paired-type homeodomain. This nuclear protein is involved in thyroid follicular cell development and expression of thyroid-specific genes. Mutations in this gene have been associated with thyroid dysgenesis, thyroid follicular carcinomas and atypical follicular thyroid adenomas. Alternatively spliced transcript variants encoding different isoforms have been described

## Selected Validation Data



Western blot analysis of Mouse Liver Tissue Lysate using PAX-8  
Mouse mAb diluted at 1:1000.