

PAX-5 Mouse Monoclonal Antibody(4E11)

Catalog No: RA10260

Basic Information

Host species	Mouse
Applications	WB, IHC
Species Cross-Reactivity	H, M, R
Specificity	The antibody detects endogenous PAX-5 proteins.
Recommended dilutions	WB 1:500-2,000 IHC: 1:100~200 Optimal dilutions should be determined by the end user.

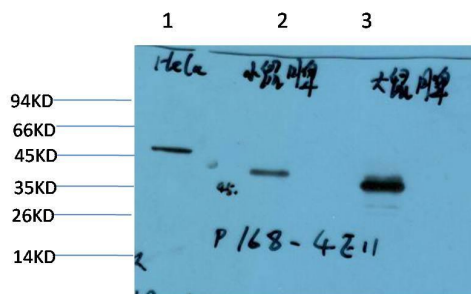
Applications

Formulation	PBS, pH 7.4, containing 0.02% sodium azide as Preservative and 50% Glycerol.
Storage	Store at -20°C. Avoid repeated freeze-thaw cycles.
Concentration	1 mg/ml
Clonality	Monoclonal

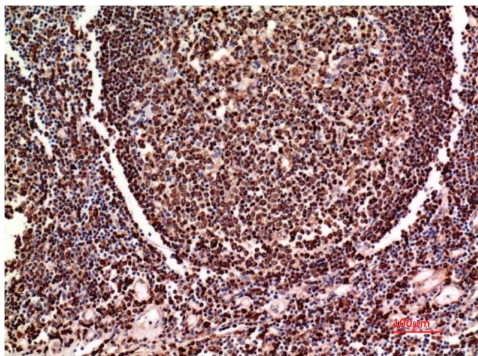
Background

Alternative Names	PAX5; Paired box protein Pax-5; B-cell-specific transcription factor; BSAP
Observed band	45
Human Gene ID	5079
Human Swiss-Prot Number	Q02548
Background	paired box 5(PAX5) Homo sapiens This gene encodes a member of the paired box (PAX) family of transcription factors. The central feature of this gene family is a novel, highly conserved DNA-binding motif, known as the paired box. Paired box transcription factors are important regulators in early development, and alterations in the expression of their genes are thought to contribute to neoplastic transformation. This gene encodes the B-cell lineage specific activator protein that is expressed at early, but not late stages of B-cell differentiation.

Selected Validation Data



Western blot analysis of 1) HeLa Cell Lysate, 2) Mouse Spleen Tissue Lysate, 3) Rat Spleen Tissue Lysate using PAX-5 Mouse mAb diluted at 1:1000.



Immunohistochemical analysis of paraffin-embedded Human Tonsil Tissue using PAX-5 Mouse mAb diluted at 1:200.